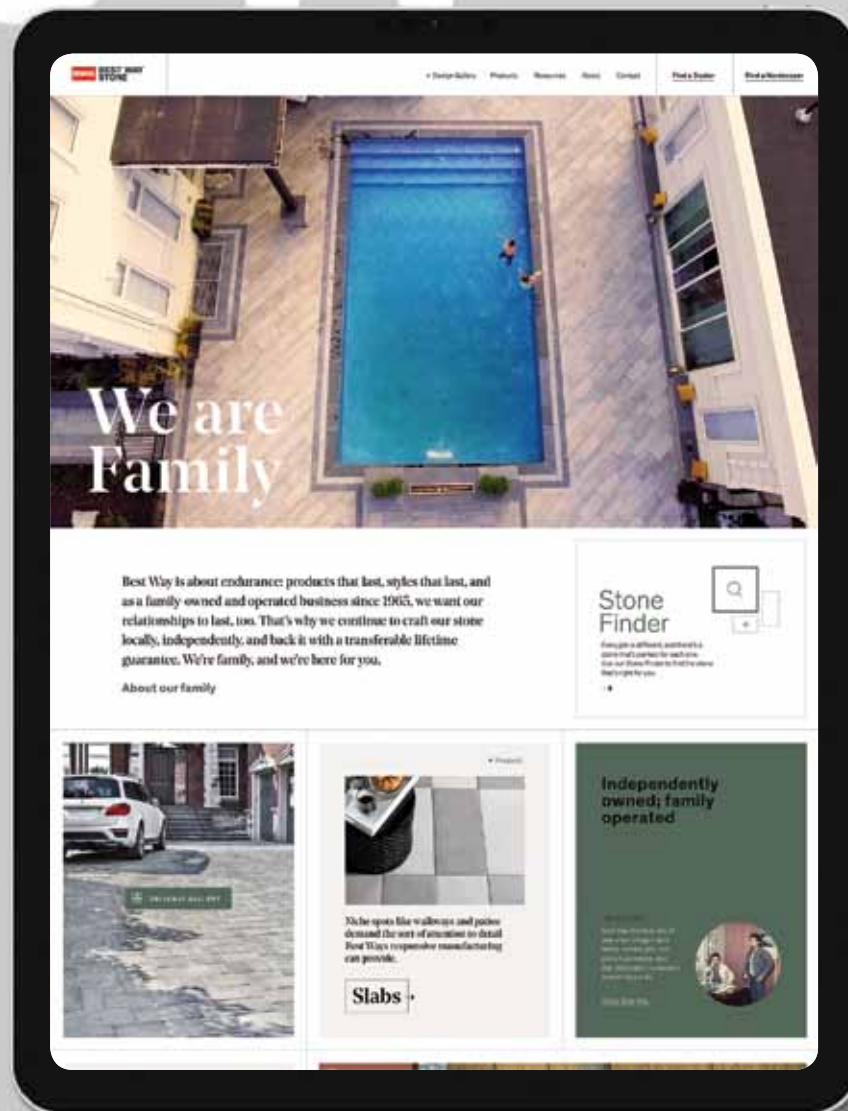


BWS **BEST WAY
STONE[®]**

**Landscape
Products**



New



Use your preferred device to visit our new website and access our latest product news, inspiration gallery, and to find a dealer. It's one more way we're giving you the best way to create your ideal outdoor space.



All you need are the best ingredients.

**1/
The best
team.**

**2/
A good
foundation.**

**3/
Curated
product.**

There's so much more that goes into creating hardscape products. It's a mix of ingredients that gives them integrity. When you choose Best Way Stone®, you're installing hardscape products that stand up – to time, to the elements, and your exacting standards.

1/

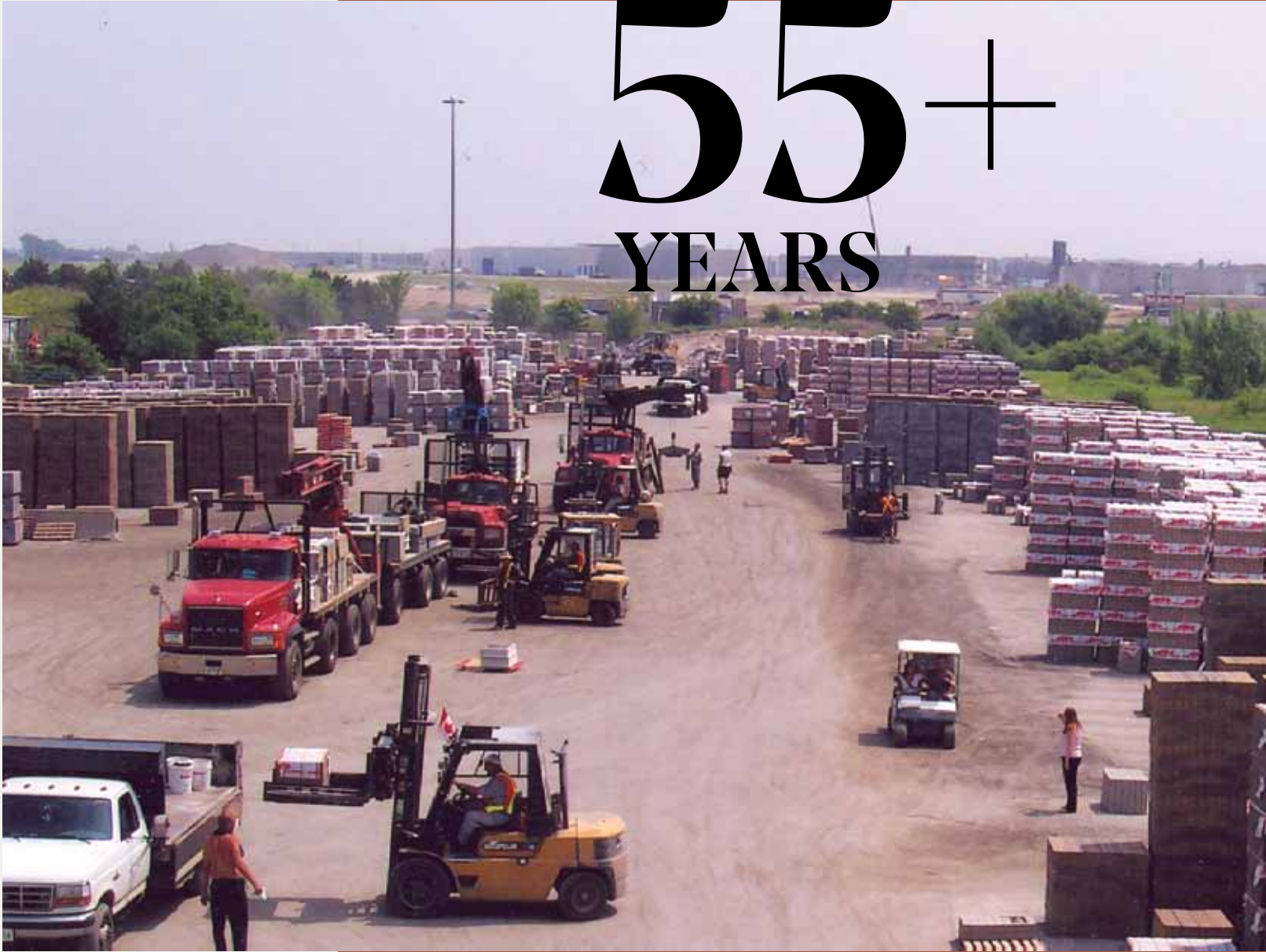


The best team.

THE BWS FAMILY

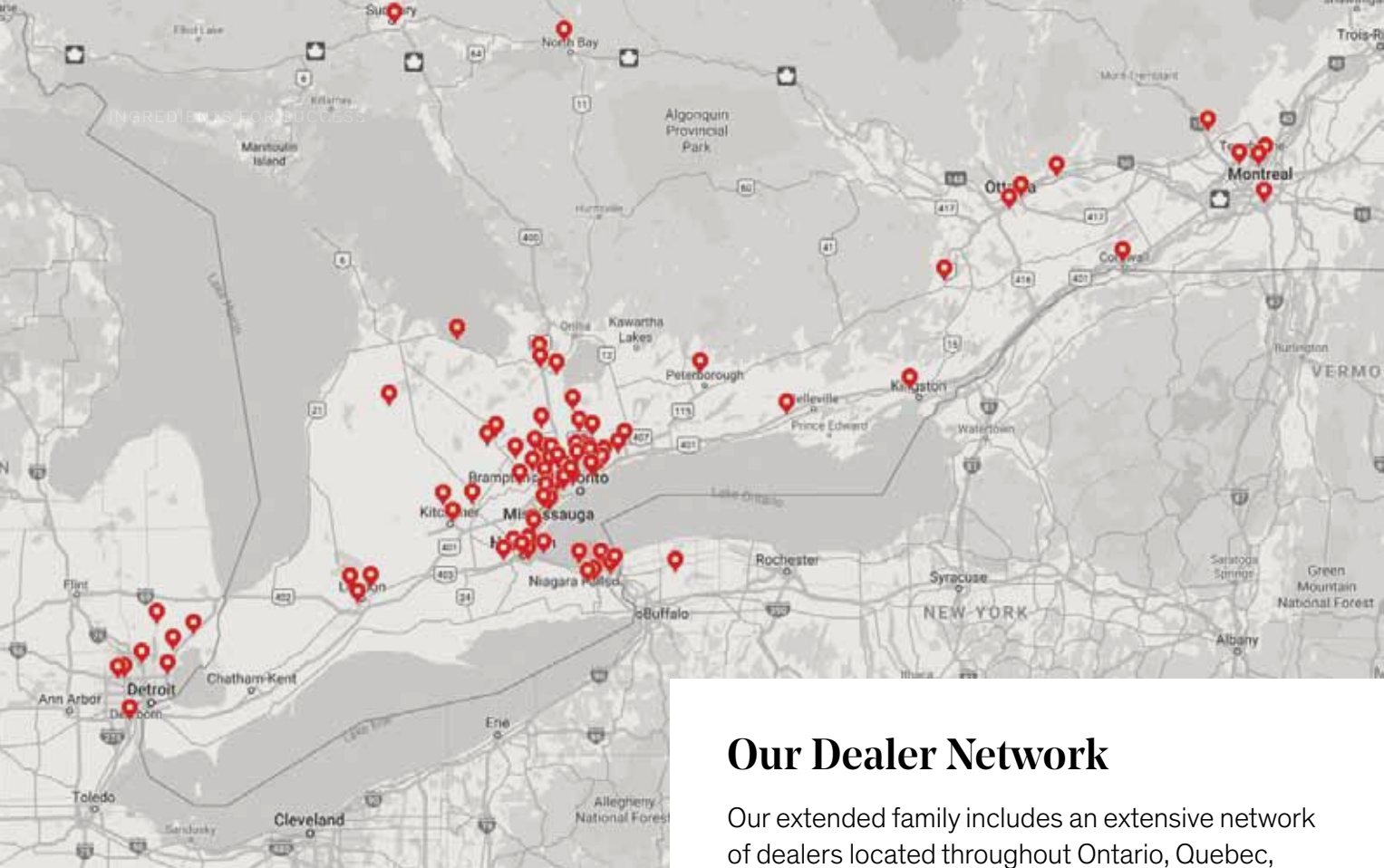
Best Way is about endurance: products that last, styles that last, and as a family-owned and operated business since 1965, we want our relationships to last, too. That's why we continue to craft our products locally, independently, and back it with a transferable lifetime guarantee. We're family, and we're here for you.

55+ YEARS



Independently Owned; Family Operated

Best Way Stone is one of only a few independent family-owned, pre-cast concrete manufacturing businesses. And that philosophy permeates everything we do. Our team is family – and one that puts your family's needs first. Even as we've grown and expanded to new locations, we've still maintained our flexibility to respond quickly to both market demands and home-owner needs. This allows us to innovate quickly.



Our Dealer Network

Our extended family includes an extensive network of dealers located throughout Ontario, Quebec, and North-East Michigan. Our dealers will help you visualize your landscape by pairing the right products with your project design and style needs.

Visit our website to find a dealer near you:

www.bestwaystone.com/find-a-dealer

The best products built using the best practices. That's the best way.



The Right Partner

Hiring a qualified hardscaper makes installing hardscape products a much more efficient experience. When hiring a qualified professional we recommend they follow industry-standard guidelines.

We recommend collecting project references and samples of previous work. Make sure they offer a comprehensive warranty and have all the required insurance and licenses.

Any certified contractor will understand the industry standards for installing hardscape products – you can download a copy to these guidelines by visiting www.icpi.org.

Visit our website to find a hardscaper near you:
www.bestwaystone.com/bws-hardscapers

2/

A good foundation.

MANUFACTURING LEADS DESIGN

Hardscaping solutions should be designed to last. So our philosophy is that manufacturing processes should always inform product design. That's why our designs transcend time – looking as good in 20 years as they did the day they were installed.



Thoughtful Innovation

We've built production facilities and equipped them with manufacturing technology and our own proprietary processes that are engineered specifically to ensure our products are well-thought, well-designed and well-made.

With two state-of-the-art manufacturing facilities, and dealers spread out across Ontario, Quebec, and Michigan, we're completely independent and able to both hear and respond to your needs. It gives us the confidence to offer a fully transferable lifetime guarantee for everything we sell.





Our pavers and slabs are resistant to the elements, exceeding all industry standards, standing up to salt, oil, gas, and chlorine.



Our products are built using two key ingredients: quality and care. All are manufactured to meet and exceed their respective North American standards set by both the CSA and ASTM.



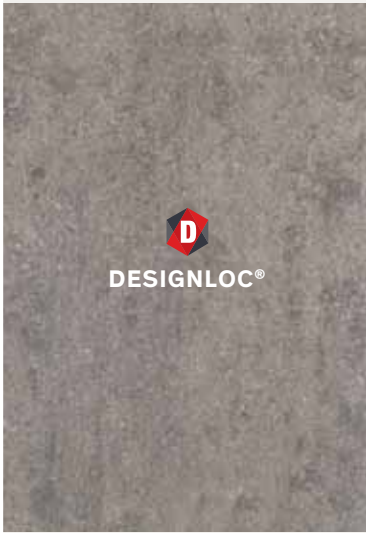
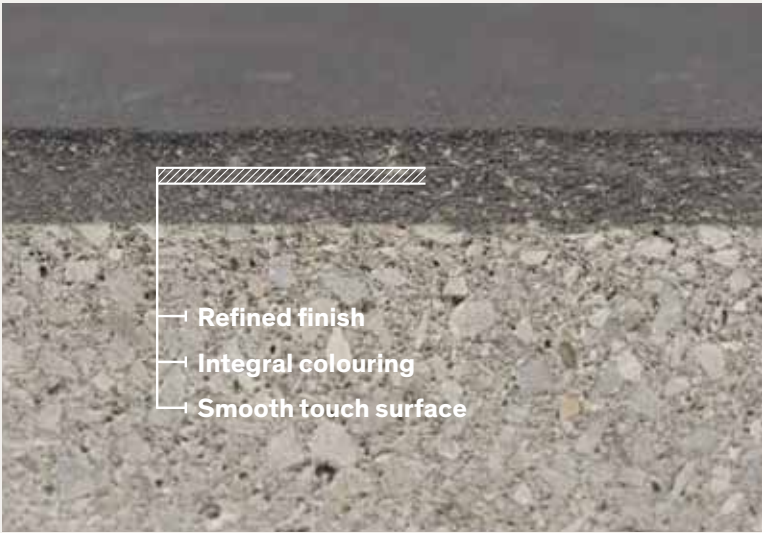
That commitment to quality is backed by our transferable lifetime guarantee on the structural integrity of our pavers. You can learn more about our transferable lifetime guarantee on our website: **bestwaystone.com**

Designed to last generations

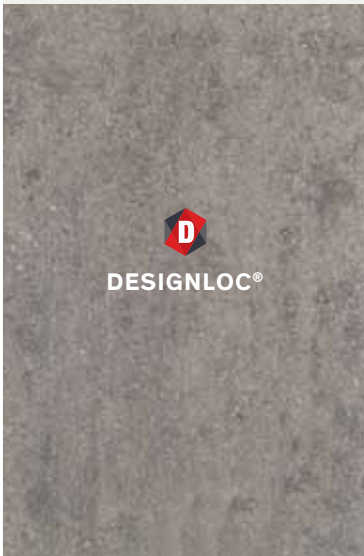
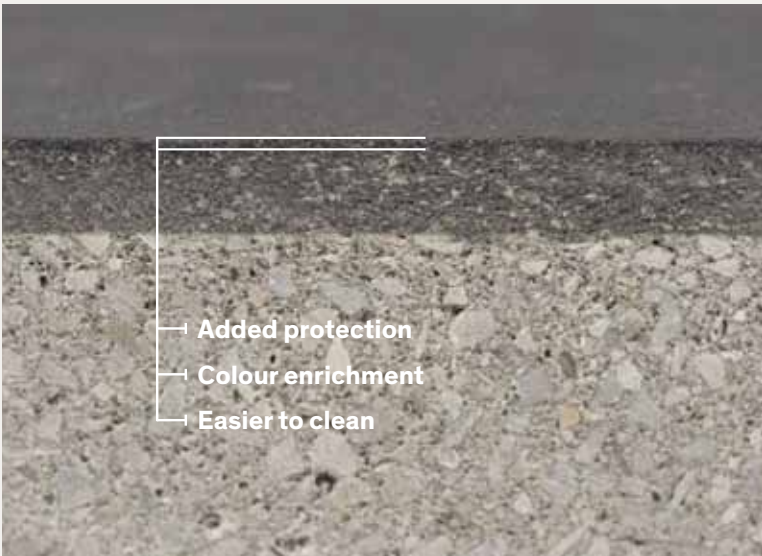
One of the most common questions we get from customers purchasing hardscape products is knowing how they will wear over time. Our recent technological advancements provide layers of enriched surfaces and colour, bringing product aesthetics and performance to the next level.



The DesignLoc® surface refinement technology is a strategic mix design that produces a highly controlled and refined surface offering.



ChromaTec™ protective surface enhancer adds a level of protection that helps resist the threat of stains from foreign elements while enhancing the vibrancy of the coated surface.



3/

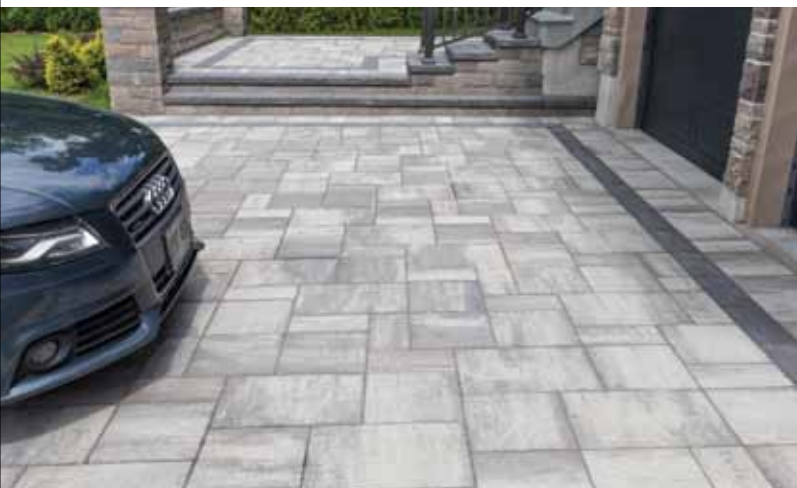
Curated product.

Today's landscapes are thoughtfully and creatively built for living, working and playing, and bring together form and function for a quality outdoor experience. No matter what budgets or timelines await you this year, there are plenty of ways to incorporate modern tastes into hardscaping designs. Whether you're planning a full outdoor revamp, or just installing a new element or two, selecting the right product can make all the difference. We make it less overwhelming by providing a highly curated product portfolio that works seamlessly together.



Flexible solutions

Open to exploring fresh options but just one step at a time? Then porcelain pavers can be a good transitional product. Interested in being environmentally conscious? Permeable pavers offer some great advantages for water management and conservation. Looking to stand out? Mixing colours and textures can create more geometric patterns, adding touches of personality to otherwise uniform spaces.





Form

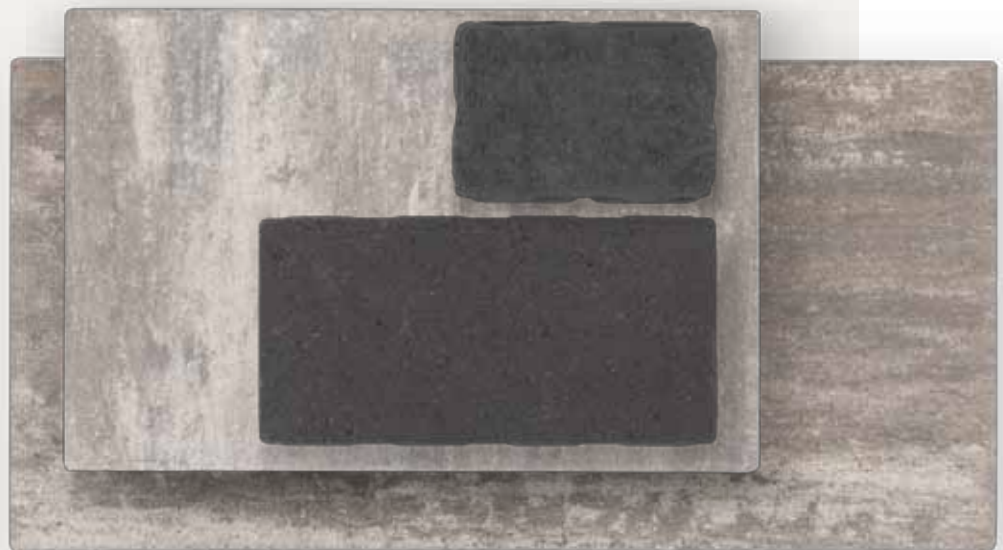
Contrast with shapes and textures to create a more rustic or natural topography.



**Combining quality
hardscape materials is
the best way to create
your dream landscape.**

Scale

Combining various sizes draws attention to key areas in your landscape.





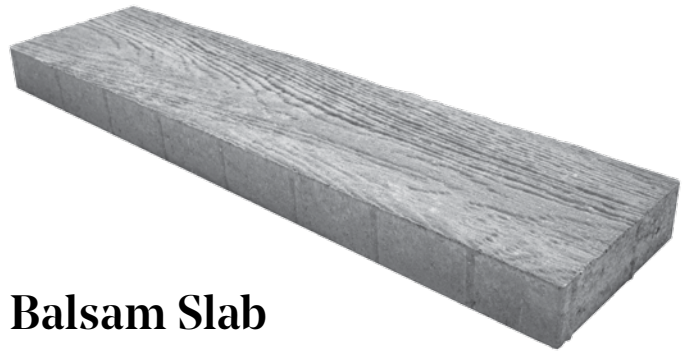
Colour

Lighter colours can make a landscape seem larger, while darker colours make large expanses feel more intimate. Mix the two to create areas of personality and warmth.

Texture

With a variety of surface textures to choose from, we have your landscape style covered. Make a bold statement by combining different product textures in your design to create visual interest.





Balsam Slab

If you desire a more rustic feel to your landscape, the Balsam slab has you covered. This single-size slab is designed to give you the look and feel of a real wood deck, with the durability of concrete.



New for 2020



BW300

Add some texture to your landscape with the BW300 60mm slab. Ideal for patios & rooftop applications.

Colours



CARRARA



MUSKOKA



SILVER BIRCH



WINTERBORN



Opus Slab

Smooth surfaces and sharp clean lines make this 60mm slab ideal for any modern landscape design.



Glacier Creek

One of our most popular colours is now available in both Adelaide and Richmond 50 and 80.



Ikon Wall

Compliment your modern landscape design with this smooth-faced, large scale wall. Use different colours for added contrast.





Contents

INTRO

- 2 The Best Team
- 6 A Good Foundation
- 10 Curated Product
- 14 New for 2020
- 18 2020 Lookbook

PAVERS

- 34 Manhattan Plank
- 36 Trevista® 80 Smooth
- 38 Trevista® 80 Textured
- 40 Richmond™ 80
- 41 Adelaide™ 80
- 42 Strada® Nova
- 43 Corso®
- 44 Moderna®
- 44 Ardesia®
- 45 Standard™
- 45 Double Standard™

SLABS

- 48 Balsam
- 50 BW300
- 51 Opus
- 52 Avari™
- 54 Trevista® 50 Smooth
- 56 Trevista® 50 Textured
- 58 Richmond® 50
- 59 Adelaide® 50
- 60 Tresca™
- 62 Basketweave™
- 63 Flagstone™
- 63 Standard Press™
- 64 Dado Ceramica Porcelain Slabs

WALLS

- 68 Soho
- 70 Hazelton
- 71 Antico® Stacker
- 72 Garden Lock™
- 73 Parkwall®
- 74 Palladio® Antico®
- 75 Parkwall® Antico®
- 76 Rockton
- 77 Belvedere™
- 78 Ikon
- 79 RidgeWall® SRW System

STEPS, CAPS & CURBS

- 82 Ikon Step
- 83 Ridge Step™
- 84 Camden Step™
- 85 Sopra Coping
- 86 Montana Cap
- 87 Riviera Cap
- 88 Barollo® Coping
- 89 Parkwall® Column Cap
- 89 Bullnose Column Cap
- 90 Dimensional Coping
- 90 Antico® Curb
- 91 Garden Curb
- 91 Driveway Curb

ENVIRO PRODUCTS

- 94 Moderna® Permeable Paver System
- 95 White Solar Reflective Rooftop Paver

FEATURES

- 98 Forno Antico® Pizza Oven
- 99 Garden Lock™ Fire Pit

HARDSCAPING ACCESSORIES

- 100 Joint Sand
- 100 Sealers & Cleaners
- 101 Tools, Accessories & Other
- 101 Precast Concrete
- 102 Care & Considerations
- 104 Pattern Guides
- 106 2020 Colour Chart
- 108 Masonry & Builder

LEGEND



Vehicle use permitted



Permeable and/or Eco-Friendly product



Pedestrian traffic only



Vibrating plate permitted (rubber membrane required)



Made with DesignLoc®



Made with ChromaTec™



Tresca™ (3 sizes)
Glacier Creek

Yes, a well-designed outside space not only adds property value, it creates a sense of joy every time you return home. The past few years homeowners have been finding creative ways to build high-impact front entrances and restful backyard retreats that are built to last so they can be used and enjoyed through all the seasons year-after-year. Here are a few of our favourites.

2020 Lookbook



Tresca™ 10x20
(Glacier Creek)



Avari™
(Glacier Creek)

Tresca™
(Driftwood)



Avari™
(Glacier Creek)



Trevista® 80 Textured
(Beige Mix)



Trevista® 50 Smooth
(Glacier Creek)



Avari™
(Glacier Creek)



Trevista® 50 Textured
(Grey Mix)



Corso®
(Ultra Black)

Avari™
(Glacier Creek)





Avari™ (Glacier Creek) with Soho wall and fireplace (Glacier Creek)

Manhattan Plank
(Glacier Creek)
Corso®
(Ultra Black)
border



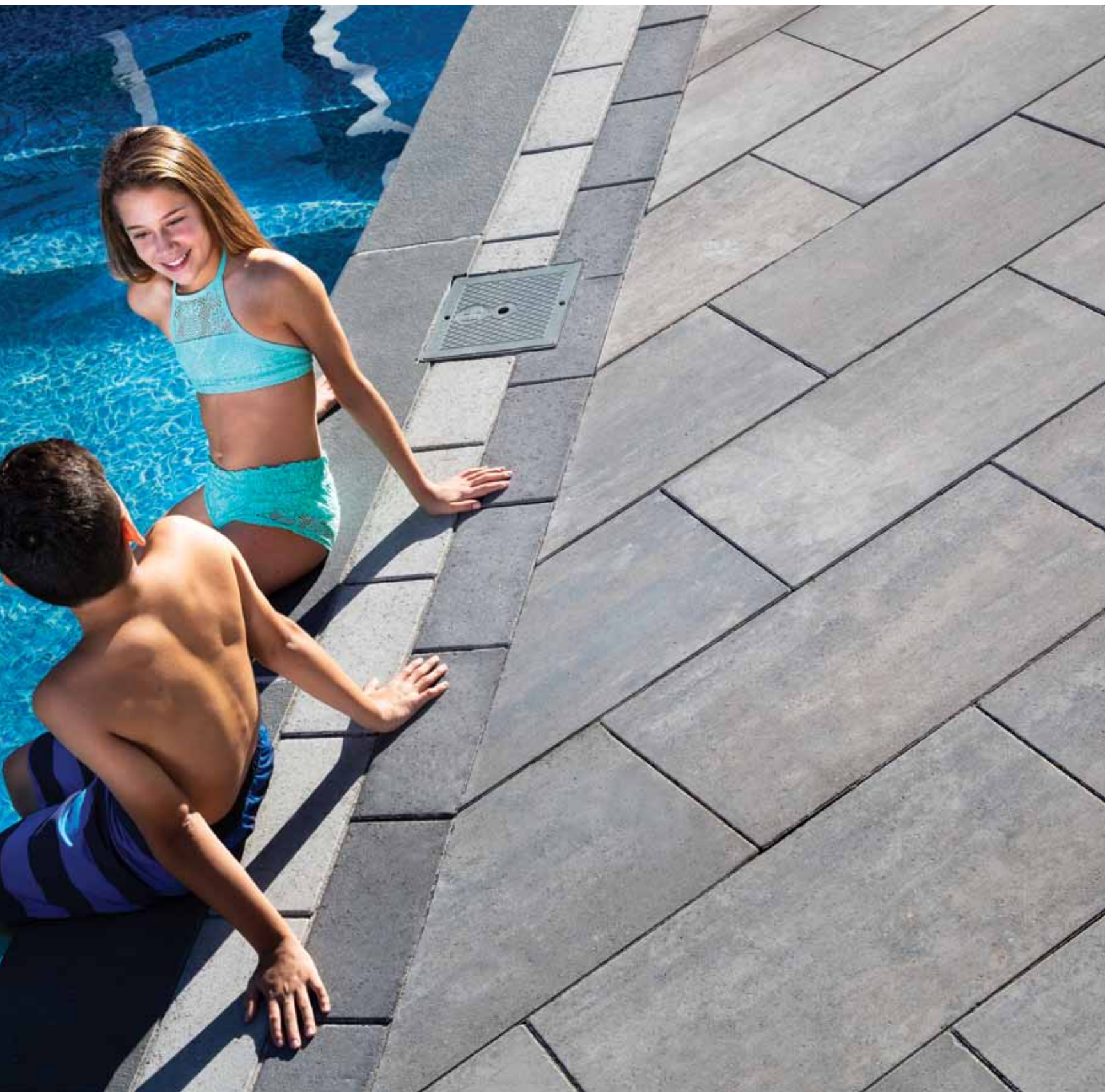
Richmond™ 80 (Grey Mix)
Corso® (Ultra Black) in-lay



Corso®
(Ultra Black)



Trevista® 50 Smooth
(Glacier Creek) with Soho
firepit (Glacier Creek)



Avari™
(Glacier Creek)
Adelaide® in-lay
(Grey & Ultra Black)



Trevista® 80 Smooth
(Grey Mix)




Trevista® 50 Textured
(Grey Mix)

Ardesia®
(Beige Mix)



Pavers



Our inspiring selection of interlocking paving stones makes it easy to add that much desired curb appeal. From smooth and modern to textured and rustic, our collection of pavers allows you to get creative and express yourself. Add that wow factor to the front of your home, along with the piece of mind of quality, strength and durability. Just see for yourself.

34 MANHATTAN PLANK
36 TREVISTA® 80 SMOOTH
38 TREVISTA® 80 TEXTURED
40 RICHMOND™ 80

41 ADELAIDE™ 80
42 STRADA® NOVA
43 CORSO®
44 MODERNA®

44 ARDESIA®
45 STANDARD™
45 DOUBLE STANDARD™





GLACIER CREEK & GREY MIX

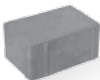
Manhattan Plank

SIGNATURE SERIES

UNITS

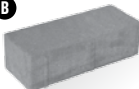


A



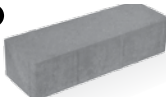
6.50" x 4.33" x 3.15"
165mm x 110mm x 80mm

B



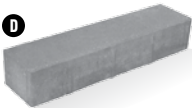
10.83" x 4.33" x 3.15"
275mm x 110mm x 80mm

C



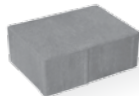
12.99" x 4.33" x 3.15"
330mm x 110mm x 80mm

D



17.32" x 4.33" x 3.15"
440mm x 110mm x 80mm

E



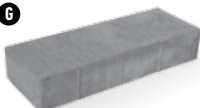
8.66" x 6.50" x 3.15"
220mm x 165mm x 80mm

F



12.99" x 6.50" x 3.15"
330mm x 165mm x 80mm

G



17.32" x 6.50" x 3.15"
440mm x 165mm x 80mm

*ALL UNITS PACKAGED TOGETHER.
A TO E IS 2:1 TO F AND G.

COLOURS



GLACIER CREEK



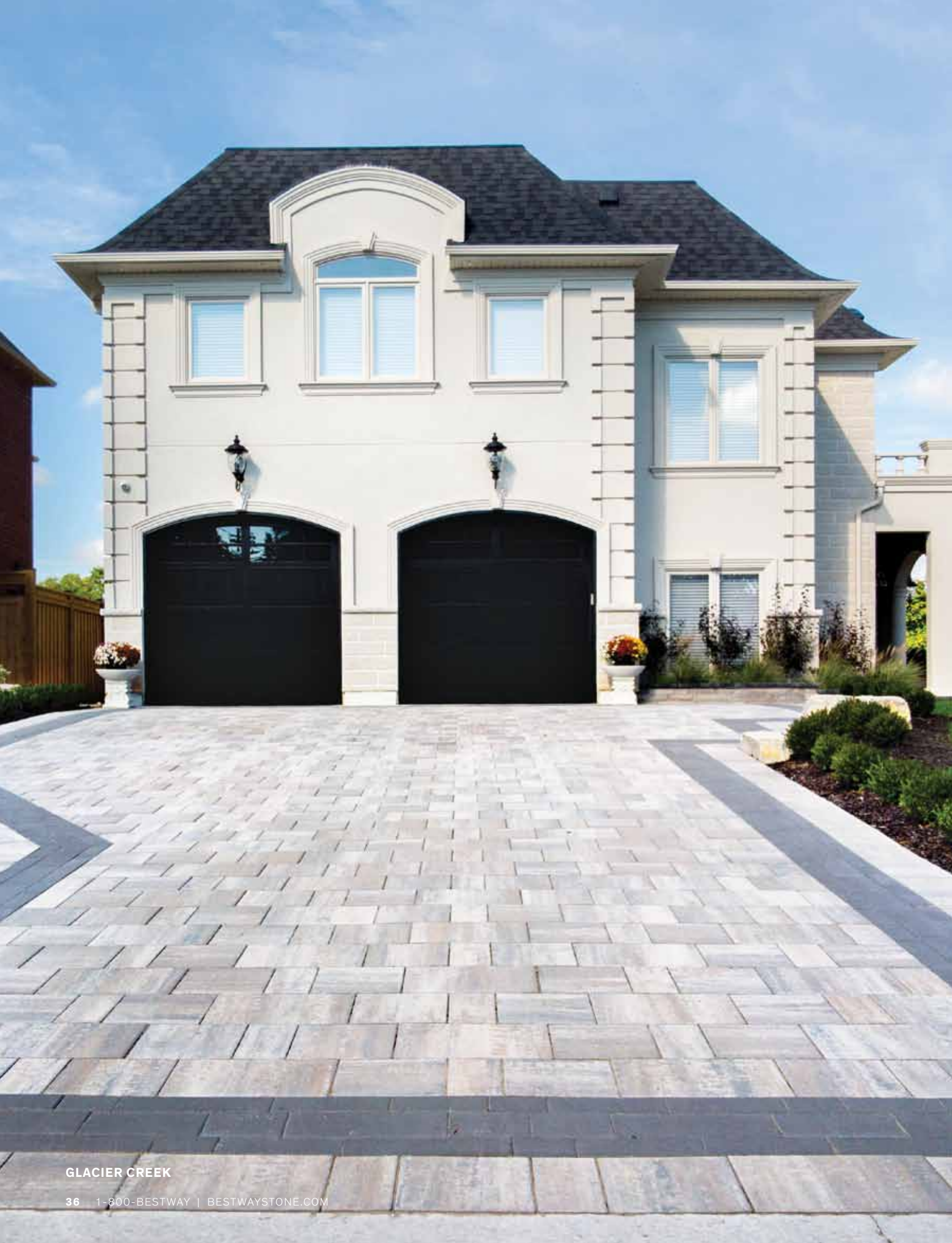
GREY MIX



ULTRA BLACK



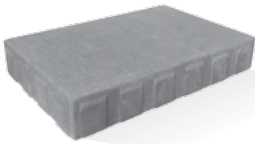
GLACIER CREEK



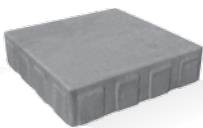
Trevista[®] 80 Smooth

SIGNATURE SERIES

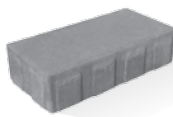
UNITS



19.5" x 13" x 3.15"
495mm x 330mm x 80mm



13" x 13" x 3.15"
330mm x 330mm x 80mm



6.5" x 13" x 3.15"
165mm x 330mm x 80mm

*ALL SIZES SOLD AND PACKAGED IN A 1:2:2 RATIO

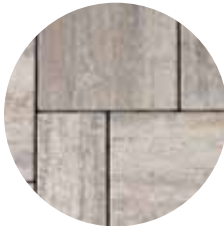
COLOURS



BEIGE MIX



DRIFTWOOD



GLACIER CREEK



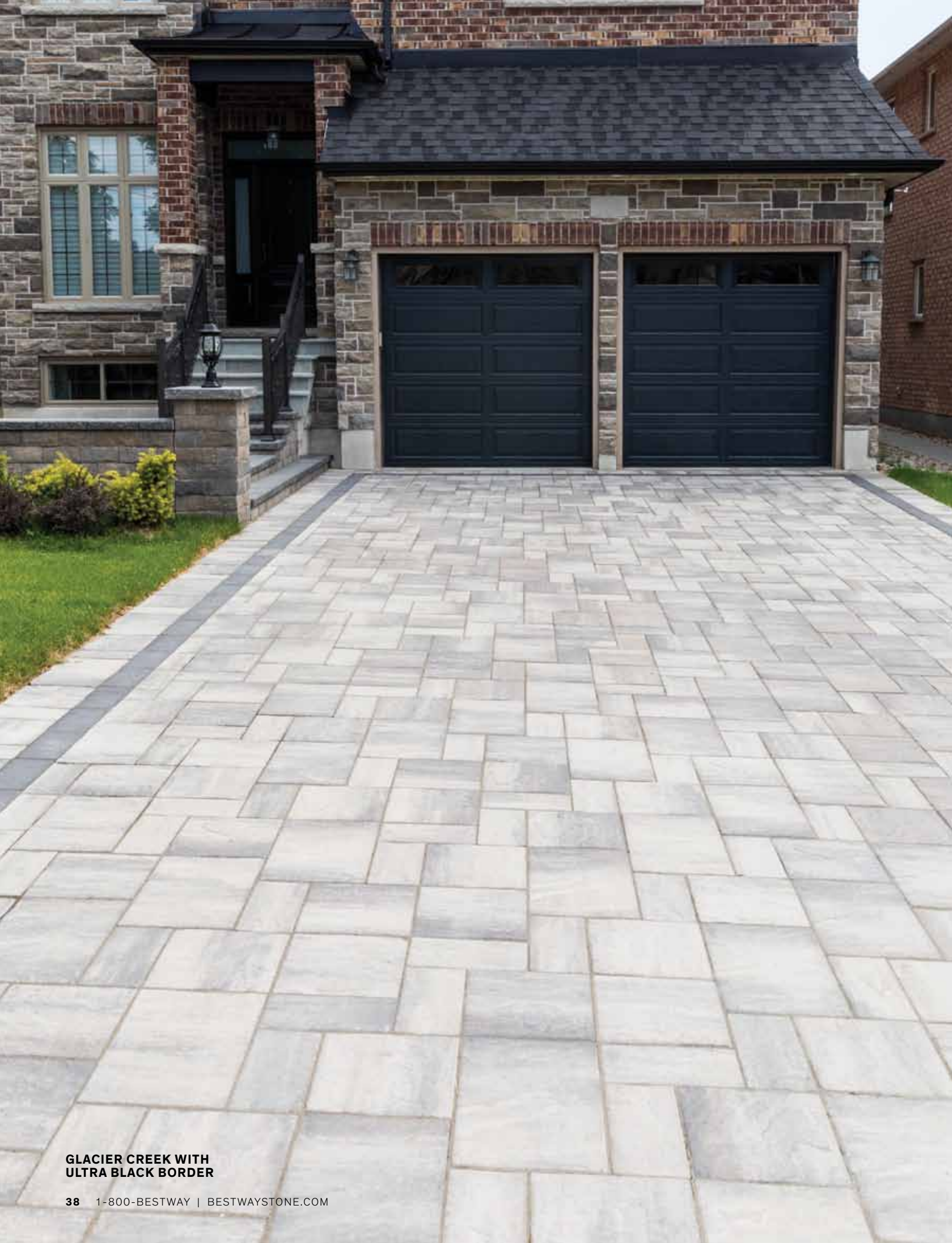
GREY MIX



KASHMIR BLEND



GLACIER CREEK



**GLACIER CREEK WITH
ULTRA BLACK BORDER**

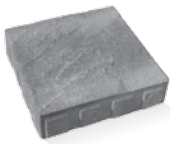
Trevista[®] 80 Textured

SIGNATURE SERIES

UNITS



19.5" x 13" x 3.15"
495mm x 330mm x 80mm



13" x 13" x 3.15"
330mm x 330mm x 80mm



6.5" x 13" x 3.15"
165mm x 330mm x 80mm

*ALL SIZES SOLD AND PACKAGED IN A 1:2:2 RATIO

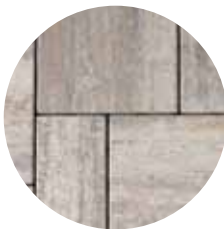
COLOURS



BEIGE MIX



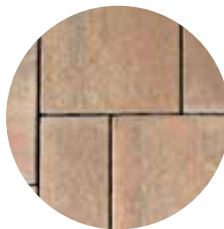
DRIFTWOOD



GLACIER CREEK



GREY MIX



KASHMIR BLEND

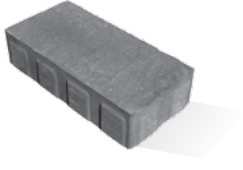


GLACIER CREEK WITH
RICHMOND ULTRA BLACK BORDER

Richmond™ 80

SIGNATURE SERIES

UNIT

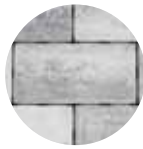


6.5" x 13" x 3.15"
165mm x 330mm x 80mm

COLOURS



BEIGE MIX



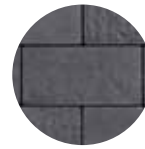
GLACIER CREEK



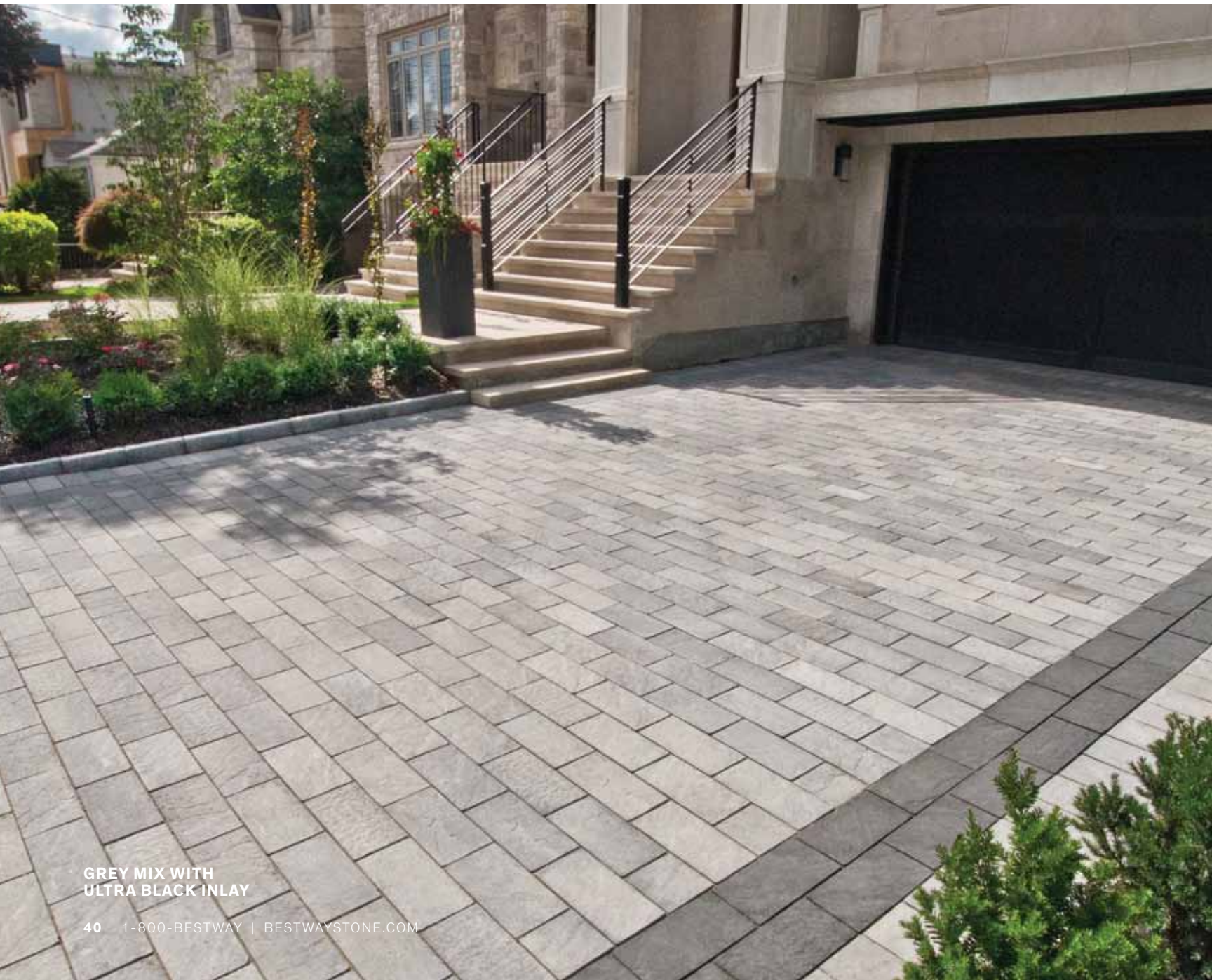
GREY MIX



KASHMIR BLEND



ULTRA BLACK

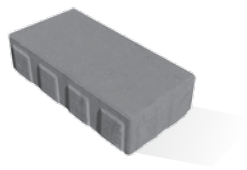


GREY MIX WITH
ULTRA BLACK INLAY

Adelaide™ 80

SIGNATURE SERIES

UNIT



6.5" x 13" x 3.15"
165mm x 330mm x 80mm

COLOURS



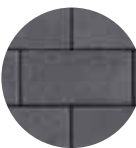
GLACIER CREEK



GREY



SAHARA BLEND



ULTRA BLACK

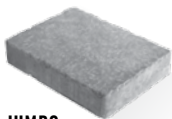


GREY

Strada[®] Nova

CLASSIC SERIES

UNITS



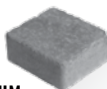
JUMBO

10.28" x 13.78" x 2.75"
261mm x 350mm x 70mm



LARGE

8.19" x 6.88" x 2.75"
208mm x 175mm x 70mm



MEDIUM

6.14" x 6.88" x 2.75"
156mm x 175mm x 70mm



SMALL

4.13" x 6.88" x 2.75"
103mm x 175mm x 70mm

*ALL SIZES SOLD AND PACKAGED SEPARATELY

COLOURS



BEIGE MIX



GREY MIX



RUSTIC
SALMON MIX



SAHARA BLEND



ULTRA BLACK
(NOT AVAILABLE IN MEDIUM)



GREY MIX

UNITS



9.96" x 5.24" x 2.75"
253mm x 133mm x 70mm



7.60" x 5.24" x 2.75"
193mm x 133mm x 70mm



5.24" x 5.24" x 2.75"
133mm x 133mm x 70mm

COLOURS



GREY MIX



ULTRA BLACK



*ALL SIZES SOLD AND PACKAGED TOGETHER IN A 1:1:1 RATIO

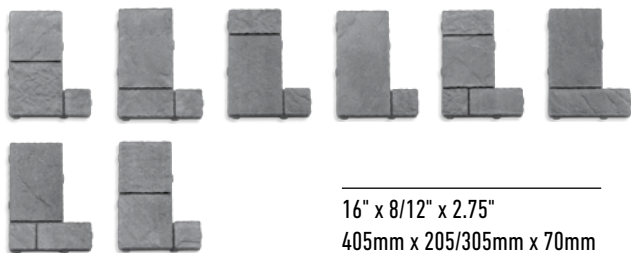


ULTRA BLACK

Moderna®

CLASSIC SERIES

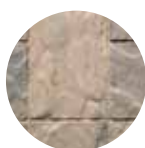
UNITS



16" x 8 1/2" x 2.75"
405mm x 205/305mm x 70mm

*ALL UNITS SOLD AND PACKAGED TOGETHER
(1 BUNDLE LAYER SHOWN ABOVE)

COLOURS



BEIGE MIX



GREY MIX



GREY MIX (PERMEABLE)

Ardesia®

CLASSIC SERIES

UNITS



19.29" x 10.41" x 2.75"
490mm x 265mm x 70mm

*ALL UNITS SOLD AND PACKAGED TOGETHER
(1 BUNDLE LAYER SHOWN ABOVE)

COLOURS



BEIGE MIX



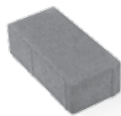
GREY MIX



BEIGE MIX

Standard™

UNIT



3.93" x 7.87" x 2.36"
100mm x 200mm x 60mm

COLOURS



BUFF MIX



BUFF-BROWN MIX



GREY MIX



RED MIX



SALMON MIX



GREY



CHARCOAL



RED



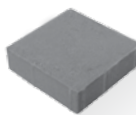
CLASSIC SERIES



BUFF-BROWN MIX

Double Standard™

UNIT



7.87" x 7.87" x 2.36"
200mm x 200mm x 60mm

COLOURS



GREY MIX



RED MIX



SALMON MIX



GREY



CHARCOAL



RED




CLASSIC SERIES



GREY MIX

Slabs



Oversized slabs are the best way to make a big impression. Whether you prefer an extra-large modern design or a traditional slate, we've curated a collection of styles, textures and colours that make mixing and matching a dream in creativity.

48 BALSAM
50 BW300
51 OPUS
52 AVARI™
54 TREVISTA® 50 SMOOTH

56 TREVISTA® 50 TEXTURED
58 RICHMOND® 50
59 ADELAIDE® 50
60 TRESKA™
62 BASKETWEAVE™

63 FLAGSTONE™
63 STANDARD™ PRESS
64 DADO CERAMICA
PORCELAIN SLABS





UNITS



31.5"w x 7.87"h x 2.36"d
800mm x 200mm x 60mm

COLOURS



GLACIER CREEK



MUSKOKA



SILVER BIRCH



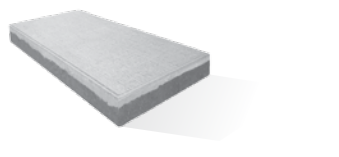
SILVER BIRCH

BW300



SIGNATURE SERIES

UNIT



11.81" w x 23.62" h x 2.36" d
300mm x 600mm x 60mm

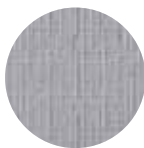
COLOURS



NIGHTFALL



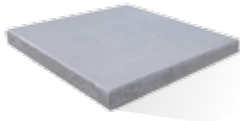
PEARL



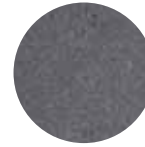
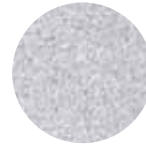
PHANTOM



PEARL AND PHANTOM

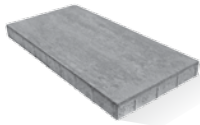
UNIT

23.62" w x 23.62" h x 2.36" d
600mm x 600mm x 60mm

COLOURS**NIGHTFALL****PEARL****PHANTOM**



UNIT



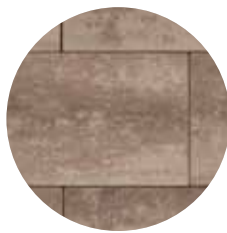
28" x 14" x 2"
710mm x 355mm x 50mm



COLOURS



CARRARA
(DESIGNLOC ONLY)



DRIFTWOOD



GLACIER CREEK



GREY MIX



ULTRA BLACK



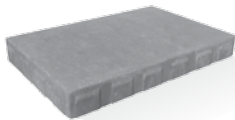
GLACIER CREEK



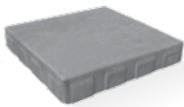
Trevista® 50 Smooth

SIGNATURE SERIES

UNITS



19.5" x 13" x 2"
495mm x 330mm x 50mm



13" x 13" x 2"
330mm x 330mm x 50mm



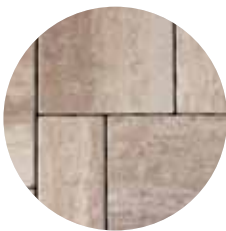
6.5" x 13" x 2"
165mm x 330mm x 50mm

*ALL SIZES SOLD AND PACKAGED TOGETHER IN A 1:2:2 RATIO

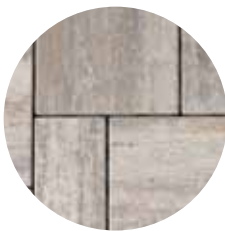
COLOURS



BEIGE MIX



DRIFTWOOD



GLACIER CREEK



GREY MIX



KASHMIR BLEND



(2:1) GREY MIX TO BEIGE MIX



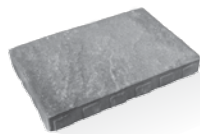
GREY MIX

56 1-800-BESTWAY | BESTWAYSTONE.COM

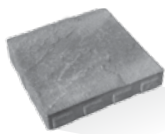
Trevista® 50 Textured

SIGNATURE SERIES

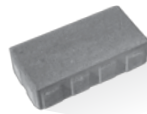
UNITS



19.5" x 13" x 2"
495mm x 330mm x 50mm



13" x 13" x 2"
330mm x 330mm x 50mm



6.5" x 13" x 2"
165mm x 330mm x 50mm

*ALL SIZES SOLD AND PACKAGED TOGETHER IN A 1:2:2 RATIO

COLOURS



BEIGE MIX



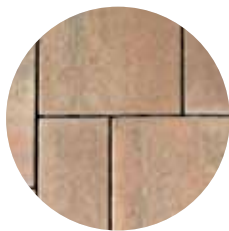
DRIFTWOOD



GLACIER CREEK



GREY MIX



KASHMIR BLEND

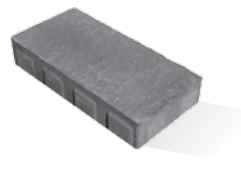


GREY MIX

Richmond[®] 50

SIGNATURE SERIES

UNIT

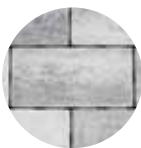


6.5" x 13" x 2"
165mm x 330mm x 50mm

COLOURS



BEIGE MIX



GLACIER CREEK



GREY MIX



KASHMIR BLEND



ULTRA BLACK

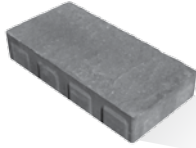


KASHMIR BLEND

Adelaide[®] 50

SIGNATURE SERIES

UNIT



6.5" x 13" x 2"
165mm x 330mm x 50mm

COLOURS



GLACIER CREEK



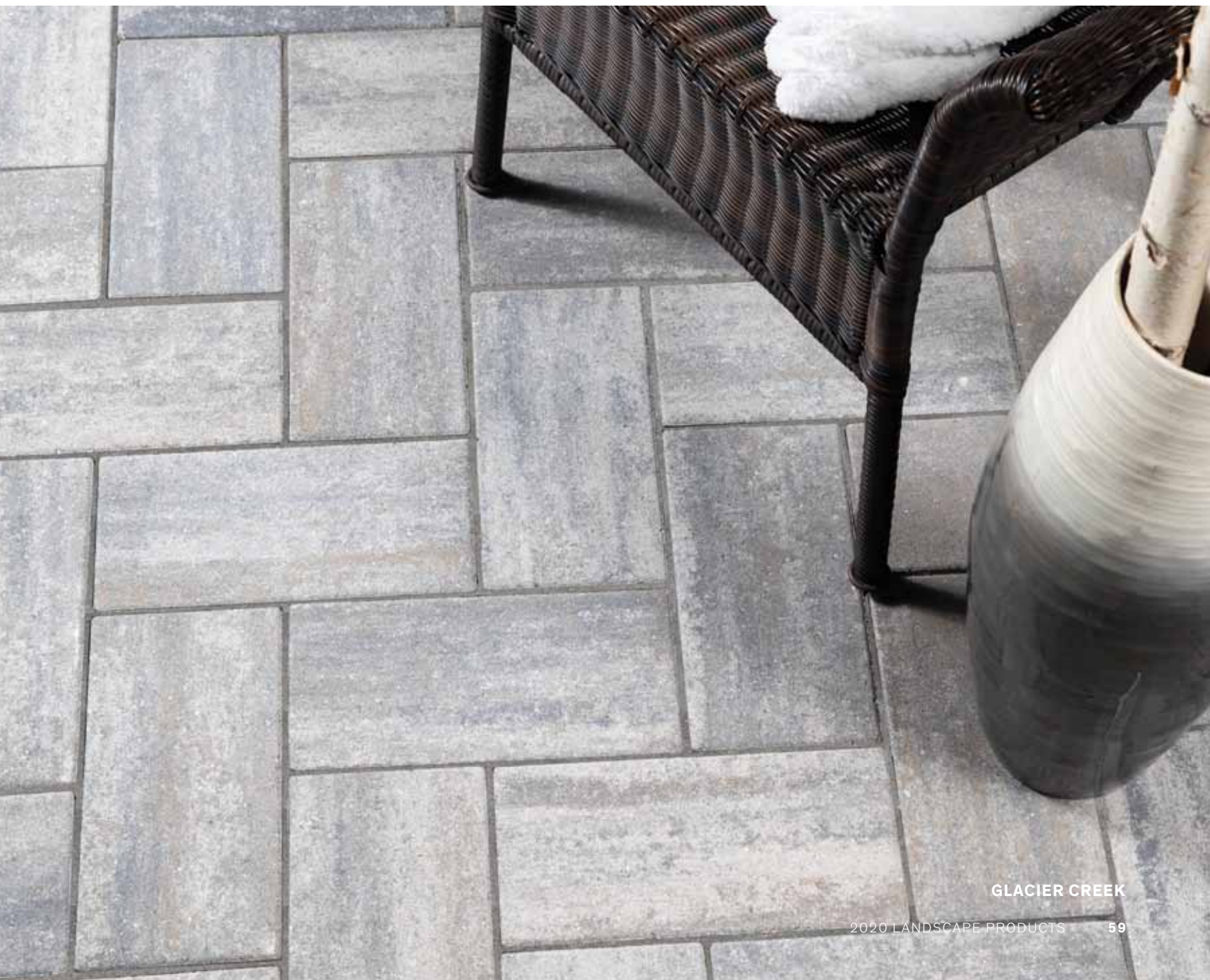
GREY MIX



SAHARA BLEND



ULTRA BLACK



GLACIER CREEK



UNITS



19.68" x 19.68" x 2"
508mm x 508mm x 50mm



9.84" x 19.68" x 2"
254mm x 508mm x 50mm



9.84" x 9.84" x 2"
254mm x 254mm x 50mm

*ALL SIZES SOLD AND PACKAGED SEPARATELY

COLOURS



BEIGE MIX



DRIFTWOOD



GLACIER CREEK



GREY MIX



GLACIER CREEK

UNIT

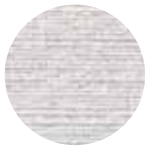


23.62" x 29.52" x 1.75"
600mm x 750mm x 45mm

23.62" x 23.62" x 1.75"
600mm x 600mm x 45mm

11.81" x 23.62" x 1.75"
300mm x 600mm x 45mm

COLOURS



WHITE



WHITE

UNIT



23.62" x 23.62" x 1.75"
600mm x 600mm x 45mm

COLOURS



GREY



SAHARA BLEND



GREY

Standard Press™

CLASSIC SERIES

UNITS*



23.62" x 29.52" x 1.75"
600mm x 750mm x 45mm
*Only available in grey

15.75" x 15.75" x 1.75"
400mm x 400mm x 45mm
*Only available in red and grey

11.81" x 23.62" x 1.75"*
300mm x 600mm x 45mm
*Only available in grey

23.62" x 23.62" x 1.75" (2" Or 2.5")
600mm x 600mm x 45mm (50 or 65)
*Available in all colours,
2" & 2.5" thickness in grey only

COLOURS



CHARCOAL



GREY



RED



SALMON




GREY



UNIVERSAL OAK
16" X 32" (40.5 X 81 CM)

Dado Ceramica Porcelain Slabs

- EASY TO INSTALL, LIGHT WEIGHT
- FROST AND MOLD RESISTANT
- SLIP RESISTANT
- EASY TO CLEAN
- DESIGNED AND MADE IN ITALY 

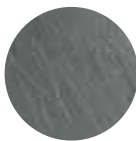


UNITS

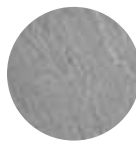


23.62" x 23.62" x 0.71"
600mm x 600mm x 18mm (20mm)

COLOURS



COUNTRY BLACK SLATE



COUNTRY GREY SLATE



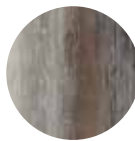
SCOUT WHITE



15.95" x 31.89" x 0.67"
405mm x 810mm x 17mm (20mm)



JASMINE




UNIVERSAL OAK



SCOUT WHITE

Walls



Every landscape needs a vertical element, and our selection of walls work seamlessly with our pavers and slabs to create that ideal topography. From a contemporary soft touch to a rustic split face, our collection of walls are engineered to maximize design flexibility and installation efficiency.

68 SOHO
70 HAZELTON
71 ANTICO® STACKER®
72 GARDEN LOCK™

73 PARKWALL®
74 PALLADIO® ANTICO®
75 PARKWALL® ANTICO®
76 ROCKTON

77 BELVEDERE™ WALL & COPING
78 IKON
79 RIDGEWALL® SRW SYSTEM

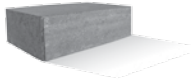


SOHO WALL (GLACIER CREEK)
AVARI (GLACIER CREEK)
ADELAIDE BORDER & ACCENT
(GREY & ULTRA BLACK)

Soho

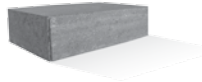
SIGNATURE SERIES

UNITS



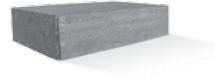
350 BLOCK

13.78"w x 8.85"d x 3.94"h
350mm x 225mm x 100mm



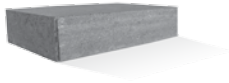
450 BLOCK

17.72"w x 8.85"d x 3.94"h
450mm x 225mm x 100mm



550 BLOCK

21.65"w x 8.85"d x 3.94"h
550mm x 225mm x 100mm



650 BLOCK

25.59"w x 8.85"d x 3.94"h
650mm x 225mm x 100mm



CORNER

13.78"w x 8.85"d x 3.94"h
350mm x 225mm x 100mm

*ALL BLOCK UNITS ARE SOLD AND PACKAGED TOGETHER IN AN EQUAL RATIO

COLOURS



CARRARA



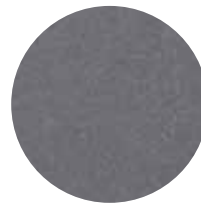
DRIFTWOOD



GLACIER CREEK



GREY MIX

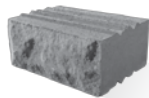


ULTRA BLACK



GLACIER CREEK

UNITS



BLOCK

11.81" w x 8.85" d x 4.92" h
300mm x 225mm x 125mm



CORNER

12.79" w x 6.88" d x 4.92" h
325mm x 175mm x 125mm

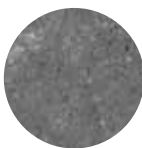
COLOURS



BEIGE MIX

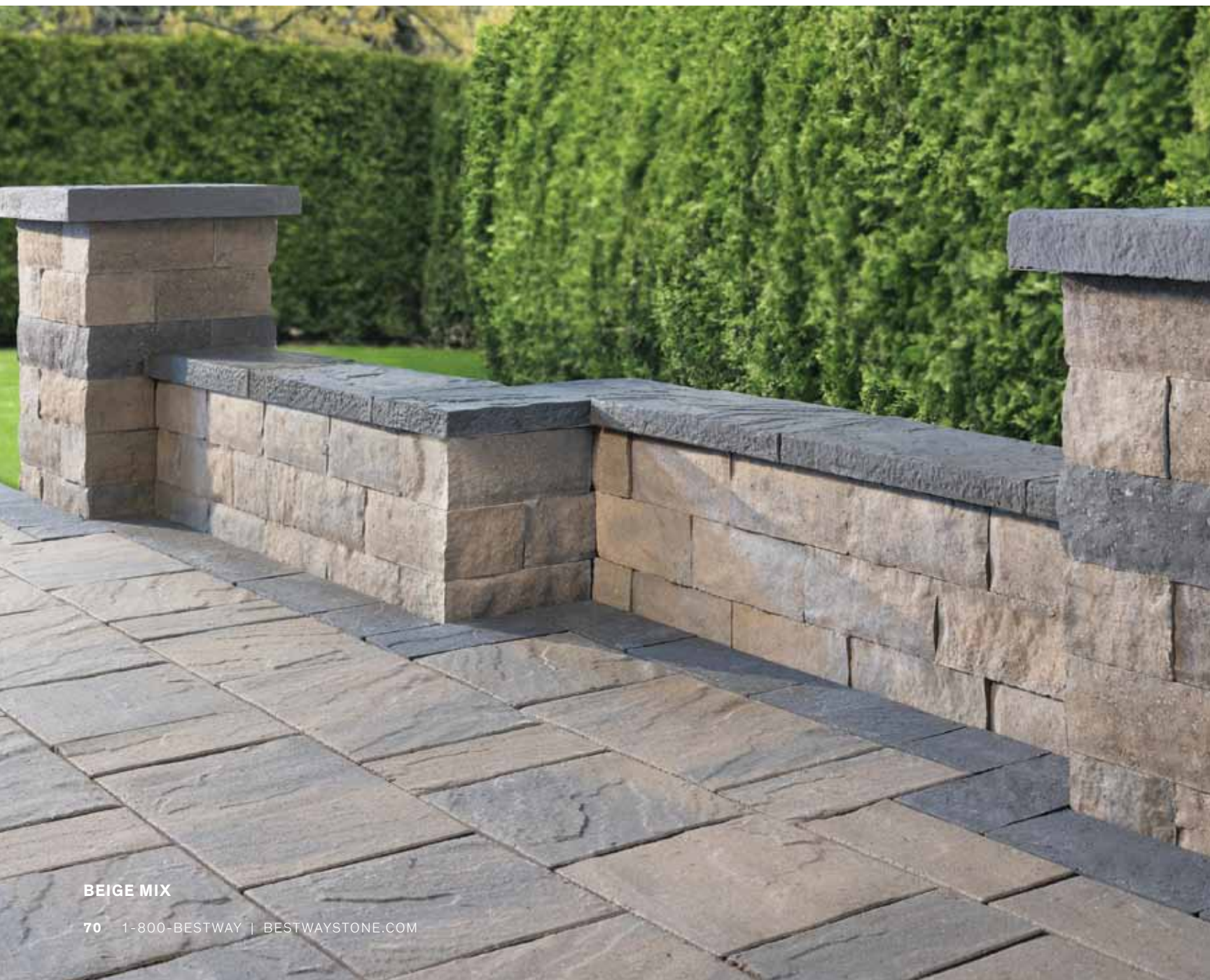


GREY MIX



ULTRA BLACK

*BLOCK AND CORNER UNITS SOLD AND PACKAGED SEPARATELY
USE MONTANA, RIVIERA, GARDEN LOCK OR SOPRA COPING FOR IDEAL FINISH



BEIGE MIX

UNITS

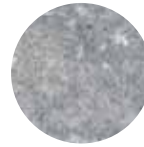


7.87" w x 11.81" d x 3.93" h
200mm x 300mm x 100mm

COLOURS



BEIGE MIX



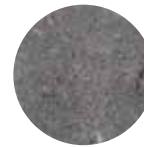
GREY MIX



SAHARA BLEND



RUSTIC
SALMON MIX



ULTRA BLACK



Garden Lock™

CLASSIC SERIES

UNITS

TRIPLE



14.96" w x 8.85" d x 4.92" h
380mm x 225mm x 125mm



9.84" w x 8.85" d x 4.92" h
250mm x 225mm x 125mm



7.48" w x 8.85" d x 4.92" h
190mm x 225mm x 125mm



COPING

15.74" w x 10.23" d x 2.95" h
400mm x 260mm x 75mm



WEDGE

8.07"/5.31" w x 8.85" d x 4.92" h
205/135mm x 225mm x 125mm



WEDGE COPING

8.23"/5.17" w x 10.23" d x 2.95" h
209/131mm x 260mm x 75mm



CORNER

13.46" w x 8.85" d x 4.92" h
342mm x 225mm x 125mm

COLOURS



BEIGE MIX



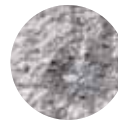
GREY



GREY MIX



RUSTIC
SALMON MIX



WINTERBORN



ULTRA BLACK
(COPING ONLY)

*TRIPLE SOLD AND PACKAGED TOGETHER IN A 1:1:1 RATIO | CORNER UNIT NOW AVAILABLE AND SOLD SEPARATELY



GREY MIX

UNITS



REGULAR
7.87"w x 11.61"d x 5.9"h
200mm x 295mm x 150mm



TAPERED
7.87"w (7"w) x 11.61"d x 5.9"h
200mm (177) x 295mm x 150mm



CORNER
7.87"w x 11.61"d x 5.9"h
200mm x 295mm x 150mm



COPING
23.62"w x 11.81"d x 2.95"h
600mm x 300mm x 75mm

COLOURS



BEIGE MIX



GREY



GREY MIX



RED MIX



SAHARA BLEND



SALMON MIX



WINTERBORN



ULTRA BLACK
(COPING ONLY)

*ALL SIZES SOLD AND PACKAGED SEPARATELY.

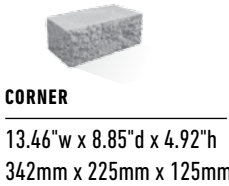
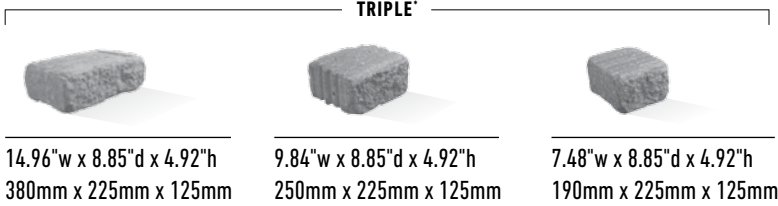


WINTERBORN

Palladio® Antico®

CLASSIC SERIES

UNITS



*TRIPLE SOLD AND PACKAGED TOGETHER IN A 1:1:1 RATIO | CORNER UNIT NOW AVAILABLE AND SOLD SEPARATELY

COLOURS



BEIGE MIX

Parkwall® Antico®

CLASSIC SERIES

UNITS



REGULAR
7.87" w x 11.61" d x 5.9" h
200mm x 295mm x 150mm



CORNER
7.87" w x 11.61" d x 5.9" h
200mm x 295mm x 150mm

COLOURS



BEIGE MIX



GREY MIX

*ALL SIZES SOLD AND PACKAGED SEPARATELY



BEIGE MIX

Rockton

CLASSIC SERIES

UNITS



42" w x 10.5" d x 6" h
1067mm x 267mm x 152mm



30" w x 10.5" d x 6" h
762mm x 267mm x 152mm



21" w x 10.5" d x 6" h
533mm x 267mm x 152mm



12" w x 10.5" d x 6" h
304mm x 267mm x 152mm



CORNER

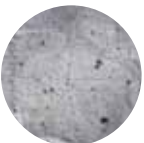
21" w x 10.5" d x 6" h
533mm x 267mm x 152mm

*CORNER UNIT SOLD AND PACKAGED SEPARATELY

COLOURS



FOND DU LAC



MANITOU BLEND



FOND DU LAC

Belvedere™ Wall & Coping

CLASSIC SERIES

UNITS



BLOCK

6.02"/4.02"w x 9.02"d x 6.02" and 2.99"h
153mm/102mm(w) x 229mm(d) x 153mm or 76mm(h)

12.01"/10"w x 9.02"d x 6.02" and 2.99"h
305mm/254mm(w) x 229mm(d) x 153mm or 76mm(h)

18.03"/15.98"w x 9.02"d x 6.02" and 2.99"h
458mm/406mm(w) x 229mm(d) x 153mm or 76mm(h)



CORNER

15" x 14.02"w x 9.02"d
6.02" or 2.99"h



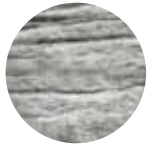
COPING

6.02"/4.02"w x 10.24"d x 2.24"h
153mm/102mm(w) x 260mm(d) x 57mm(h)

12.01"/10"w x 10.24"d x 2.24"h
305mm/254mm(w) x 260mm(d) x 57mm(h)

18.03"/15.98"w x 10.24"d x 2.24"h
458mm/406mm(w) x 260mm(d) x 57mm(h)

COLOURS



MANITOU BLEND



WINDSOR BLEND



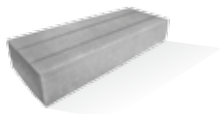
WINDSOR BLEND

Ikon

NEW

CLASSIC SERIES

UNITS



39.4" w x 6.7" h x 14" d
1000mm x 170mm x 355mm

*COPING UNIT AVAILABLE

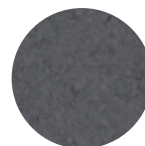
COLOURS



GREY



SAHARA BLEND



ULTRA BLACK



GREY & ULTRA BLACK

Ridgewall® SRW System

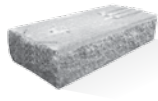
CLASSIC SERIES

UNITS



BLOCK UNIT

39.4"w x 17.1"d x 7.68"h
1000mm x 435mm x 195mm



90° CORNER UNIT

36.9"w x 17.1"d x 7.68"h
937.5mm x 435mm x 195mm



45° CORNER UNIT

39.4"w x 17.1"d x 7.68"h
1000mm x 435mm x 195mm



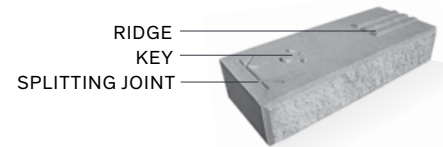
COPING UNIT

39.4"w x 19.7"d x 7.68"h
1000mm x 500mm x 195mm

COLOURS



GREY (BLOCKING & COPING)



BEST PRACTICE

When installing the Ridgewall® system, ensure to install the units ridge-to-ridge and key-to-key where possible.

FOR MORE INFORMATION VISIT:
WWW.BESTWAYSTONE.COM/RIDGEWALL

Walls · Steps · Corners · Angles · Curves

The Ridgewall® segmental retaining wall (SRW) system is a modular system primarily used to retain and stabilize large and small areas of earth, through both sheer weight and strategic design. Providing a rustic or modern aesthetic, the Ridgewall® can be used in many applications. From landscape applications requiring walls under 4 ft in height, with minimal retained loads to applications including large retaining walls, vertical and set-back as high as 20–30 feet.

The Ridgewall® system has a number of unique features that provide advantages to both the designer and the installer of the wall.

The Ridgewall® system provides integrated pre marked 45° and 90° corners so that designs can be pre-constructed to avoid block manipulation on site. The system also has a patent pending ridge and key locking system that allows the wall to be erected vertically, set-back, reversed, or any combination of the three without any separate pins or clips required.

ENGINEERING SERVICES AVAILABLE

GREY (BLOCK & COPING)

Steps, Caps & Curbs



Design is all in the details. We've created a series of steps, caps and curbs that integrate seamlessly to finish off edge details, walkways and vertical features.

82 IKON STEP
83 RIDGE STEP™
84 CAMDEN STEP™
85 SOPRA COPING
86 MONTANA CAP

87 RIVIERA CAP
88 BAROLLO® ROUND
EDGE COPING
89 PARKWALL® COLUMN CAP
89 BULLNOSE COLUMN CAP

90 DIMENSIONAL COPING
90 ANTICO® CURB
91 GARDEN CURB
91 DRIVEWAY CURB



Ikon Step

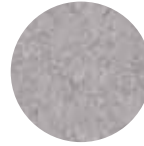
- MODERN SMOOTH FINISH
- ALLOWS FOR 14" STEP TREAD

UNIT



39.4" w x 14" d x 6.7" h
1000mm x 355mm x 170mm

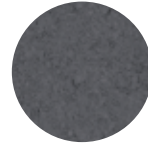
COLOURS



GREY



SAHARA BLEND



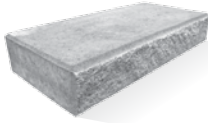
ULTRA BLACK



GREY

Ridge Step™

UNIT



39.4" w x 19.7" d x 7.68" h
1000mm x 500mm x 195mm

*CAN BE USED AS A COPING FOR THE RIDGEWALL SRW SYSTEM

COLOURS



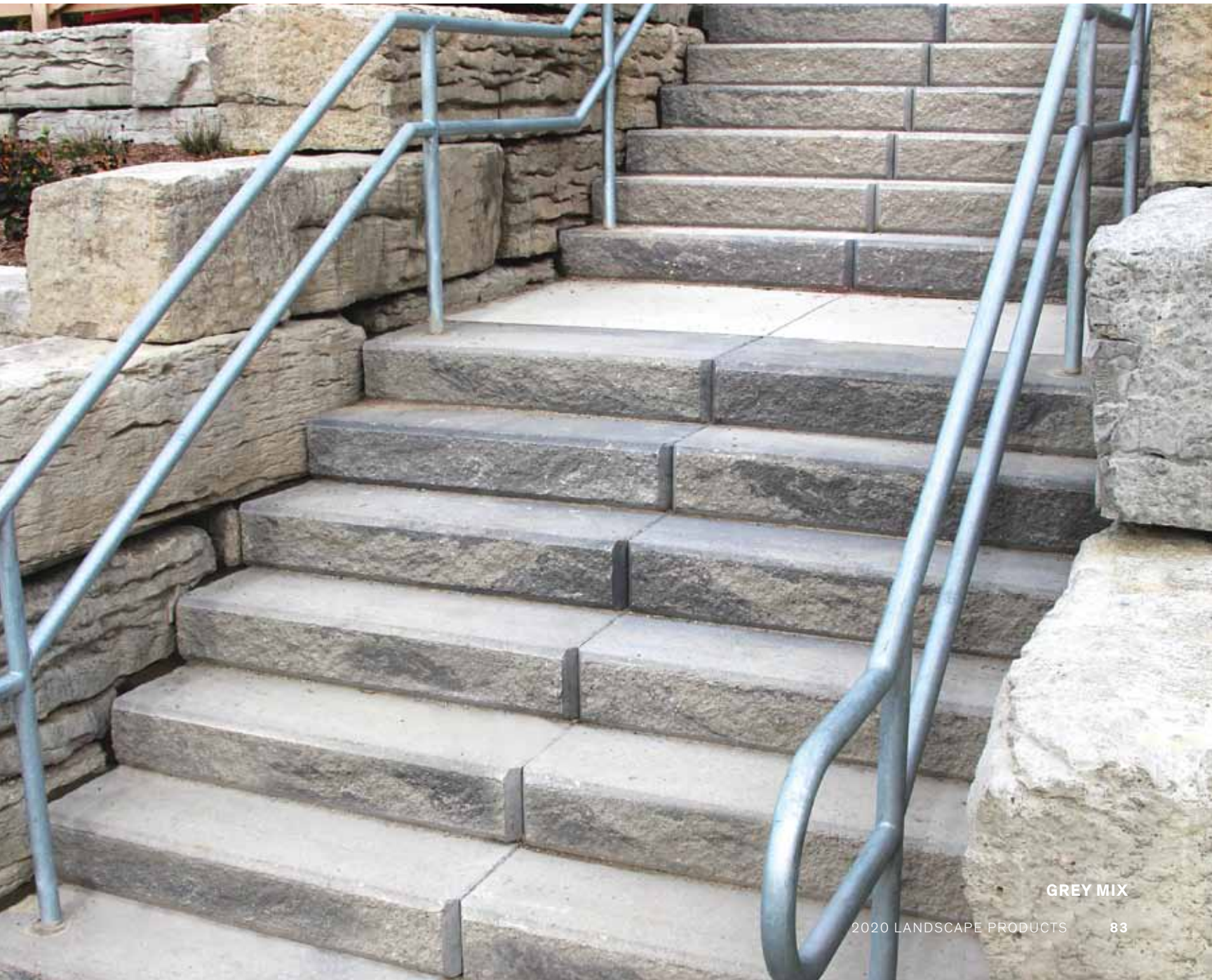
BEIGE MIX



GREY MIX



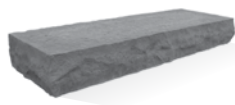
GREY



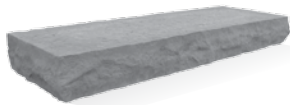
GREY MIX

Camden Step™

UNITS



48" w x 16" d x 6" h
1219mm x 406mm x 152mm



72" w x 16" d x 6" h
1829mm x 406mm x 152mm

COLOURS

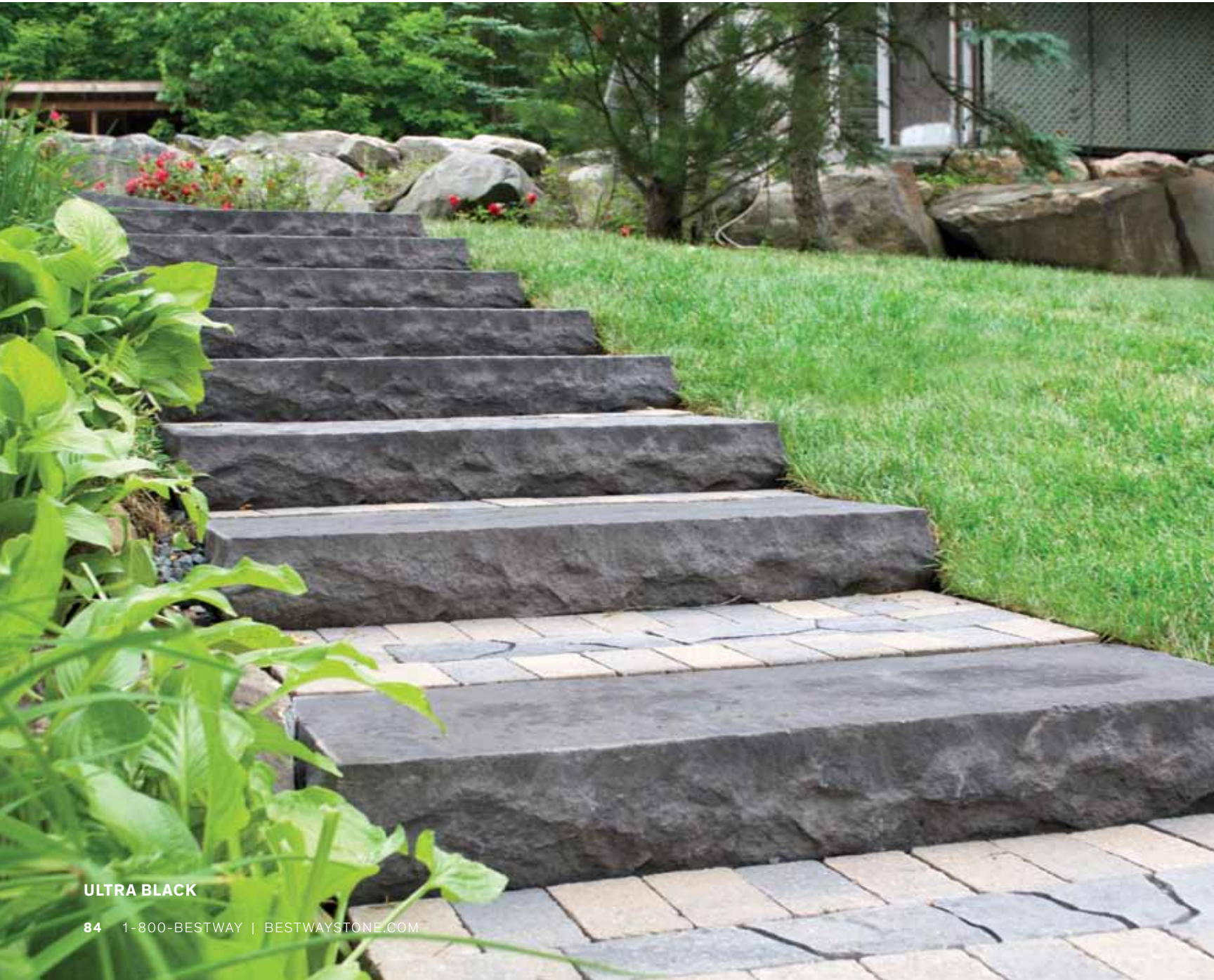


SAHARA BLEND



ULTRA BLACK

*14" & 28" FILLERS AVAILABLE

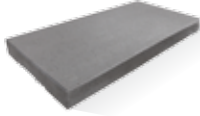


ULTRA BLACK

Sopra Coping

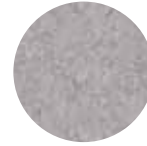
- SMOOTH CONTEMPORARY FINISH
- FITS ON PARKWALL, GARDEN LOCK, HAZELTON OR SOHO WALL SYSTEM
- ALLOWS FOR 14" STEP TREAD

UNIT



28"w x 14"d x 2.36"h
710mm x 355mm x 60mm

COLOURS



GREY



SAHARA BLEND



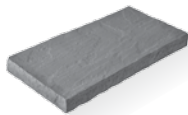
ULTRA BLACK



ULTRA BLACK

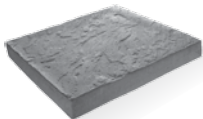
Montana Cap

UNIT



WALL CAP

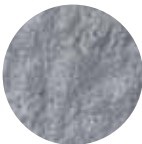
21.3" w x 10.6" d x 2" h
540mm x 270mm x 50mm



COLUMN CAP

23.6" w x 23.6" d x 3" h
600mm x 600mm x 75mm

COLOURS



EBONY



GRANITE



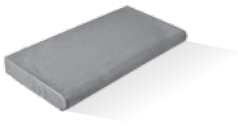
SANDSTONE



EBONY

Riviera Cap

UNITS



23.6" w x 11.8" d x 2.36" h
600mm x 300mm x 60mm

COLOURS



EBONY



GRANITE



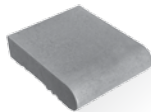
SANDSTONE



EBONY

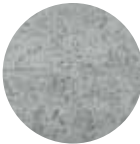
Barollo® Round Edge Coping

UNIT



9.84" w x 12.46" d x 2.95" h
250mm x 317mm x 75mm

COLOURS



GREY



SAHARA BLEND



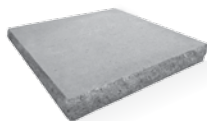
ULTRA BLACK



ULTRA BLACK

Parkwall® Column Cap

UNIT



23.62" w x 23.62" d x 2.95" h
600mm x 600mm x 75mm

COLOURS



GREY



SAHARA BLEND



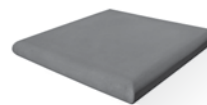
ULTRA BLACK



GREY

Bullnose Column Cap

UNIT



23.62" w x 23.62" d x 2.95" h
600mm x 600mm x 75mm

COLOURS



GREY



SAHARA BLEND



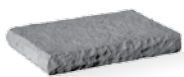
ULTRA BLACK



ULTRA BLACK

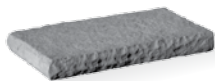
Dimensional Coping

UNITS



18" COPING

18"w x 13"d x 2.5"h
450mm x 330mm x 65mm

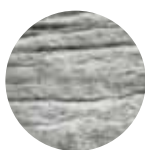


24" COPING

24"w x 13"d x 2.5"h
600mm x 330mm x 65mm

*ALL SIZES SOLD AND PACKAGED TOGETHER

COLOURS



MANITOU BLEND



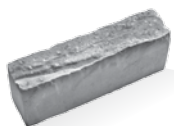
WINDSOR BLEND



WINDSOR

Antico® Curb

UNIT



15.75"w x 3.95"d x 5.91"h
400mm x 100mm x 150mm

COLOURS



BEIGE MIX



GREY MIX



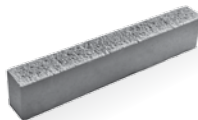
RUSTIC
SALMON MIX



GREY MIX

Garden Curb

UNIT



31.5" w x 3.95" d x 5.91" h
800mm x 100mm x 150mm

COLOURS



CHARCOAL



GREY



RED



GREY

Driveway Curb

UNIT



39.4" w x 5.9" d x 5.9" h
1000mm x 150mm x 150mm

COLOURS



CHARCOAL



GREY




RED



CHARCOAL

Private



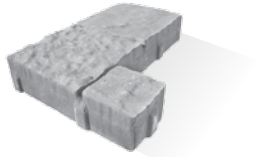
Beautify your landscape while keeping the environment's best interests in mind. Our line-up of enviro products protect against stress that certain elements like storm water run-off and the heat island effect can have on our environment's well-being.

- 94 MODERNA® PERMEABLE PAVER SYSTEM
- 95 WHITE SOLAR REFLECTIVE ROOFTOP PAVER



Moderna® Permeable Paver System

UNIT



16" x 8 1/2" x 2.75"
405mm x 205/305mm x 70mm

COLOURS



BEIGE MIX



GREY MIX

About Moderna®

Most permeable pavers are simple in their design and finished product, but this is where engineering and style combine. The Moderna® Paving Stone, a decorative, innovative and versatile single-shaped paving stone, that provides stormwater control without sacrificing style or design.

Following PICP (Permeable Interlocking Concrete Pavement) standards, the Moderna® Paving Stone provides a complete system, helping to eliminate runoff.

BENEFITS OF MODERNA®

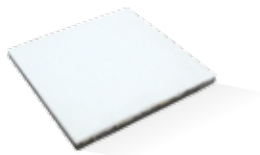
- eliminates surface runoff
- system design recharges groundwater
- reduces need for snow removal
- provides contaminant filtration
- supported by paver lifetime guarantee
- earn LEED® credits



GREY MIX

White Solar Reflective Rooftop Pavers

UNIT



UNIT SIZE

23.62" x 23.62" x 1.75"
600mm x 600mm x 45mm

PEDESTALS AVAILABLE



AVAILABLE IN A 2" AND 2.5" THICKNESS
SPECIAL ORDER ITEM, LEAD TIME REQUIRED

COLOUR



WHITE




LEED[®]ing the Way

Best Way Stone is committed to creating sustainable products that will aid in the future development of our prospering communities. Our White Solar Reflective (SR) Rooftop Paver not only aids in solar reflectivity but can also contribute to LEED[®] project certification.

WHITE

Features



Adding a little heat adds a whole new element to an outdoor space. Whether you are a cooking enthusiast or like to relax by a fireplace, our stone-based features can give your outdoor lifestyle its spark.

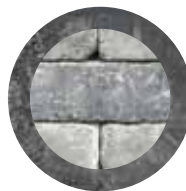
- 98 FORNO ANTICO® PIZZA OVEN
- 99 GARDEN LOCK™ FIRE PIT



Forno Antico® Pizza Oven



BASE COLOURS



GREY MIX WITH
ULTRA BLACK ACCENT



SAHARA BLEND WITH
ULTRA BLACK ACCENT

ALL-IN-ONE KIT

A PIZZA OVEN

- Sold separately
- Rust resistant stainless steel design
- Light weight
- High grade powder coat finish
- Available in charcoal and red
- 360 degree insulation wrap
- Quick heat up time
- Limited quantities available

B BASE & COUNTER

- Pre-cut blocks included
- On-site assembly required



SAHARA BLEND WITH
ULTRA BLACK ACCENT

Garden Lock™ Fire Pit

UNITS*



WEDGE

8.07"/5.31"w x 8.85"d x 4.92"h
205/135mm x 225mm x 125mm



WEDGE COPING

8.23"/5.17"w x 10.23"d x 2.95"h
209/131mm x 260mm x 75mm



INSERT RING

31.5" diameter x 12"h
800mm diameter x 305mm

AVAILABLE IN PALLADIO ANTICO (BEIGE MIX & GREY MIX)

COLOURS



BEIGE MIX



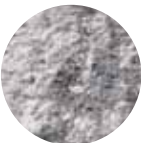
GREY



GREY MIX



RUSTIC SALMON MIX



WINTERBORN



GREY MIX

Hardscaping Accessories

Best Way Stone has curated a collection of accessories to finish your outdoor space. This series consists only of the products we know and trust in our landscape designs – so you can trust them in yours, too.

JOINT SAND



Specially formulated mixture of graded sand and high-performance polymer binding agent designed for all paver and natural stone joints up to 4" (10 cm). It will remain stable and flexible in the most extreme weather conditions and freeze/thaw cycles when properly installed.

Sable Marco
Evolution Polymeric

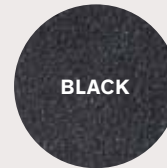
ADDITIONAL SAND
BOMIX PRE-DRIED JOINT SAND



BEIGE



GREY



BLACK

SEALERS & CLEANERS

Seal King paving stone sealer

- water and acrylic based
- high and satin gloss finish
- efflorescence remover
- oil and grease remover
- seal grip
- sealer remover

Kimbol sealer

- water and acrylic based
- high and satin gloss finish
- efflorescence remover
- oil and grease remover

Global Sealer Technologies

concrete cleaner

- effectively removes concrete film residue
- best used on non-polished surfaces
- effective on pavers, concrete and brick
- environmentally safe product
- water clean up





TOOLS, ACCESSORIES & OTHER

Adhesives

- butyl tape
- landscape adhesive tubes

Aggregates

- 1/4" chip
- 3/8" gravel (loose)
- 3/4" crusher run
- 3/4" gravel (bags only)
- brick sand
- concrete sand
- limestone screening

Cements

- masonry cement (S)
- portland cement (GU)

Edge Restraints

- Brickstop aluminum edge restraint
- Brickstop Beast plastic edge restraint
- Snapedge plastic edge restraint

Fabrics

- construction fabric
- geogrid tie-back
- landscape fabric
- spikes

Ice Control

- Britech Ice Melt System

Tools & Accessories

- brooms
- caulking guns
- gloves
- hand tampers
- mallets/hammers
- Night Sight® solar lights
- levels
- plate tampers
- shovels
- string lines
- wheel barrows

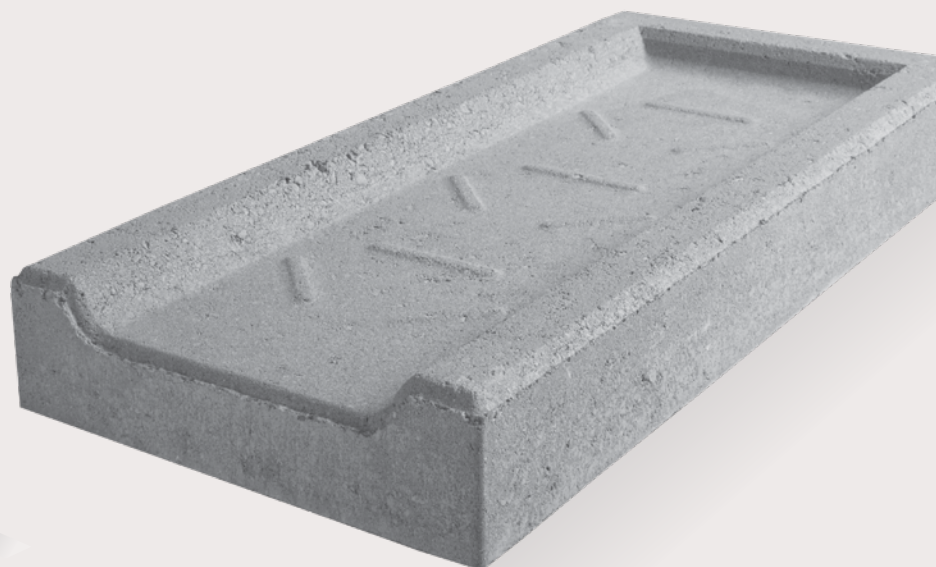
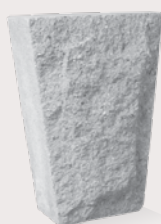


Pave Tool
INNOVATORS
Tools for Installing Stone & Brick

PRECAST CONCRETE

- parking lot bumper curbs (96"x10"x6") (96"x12"x8")
- simplicity steps (36"w / 48"w / 60"w / 72"w)
- platforms (36"w / 48"w)
- chimney caps
- keystones
- splash pads
- step risers
- window sills

Visit bestwaystone.com for more information.



Care & Considerations

Setting a base

The quality of work put into establishing a solid foundation is vital to the overall performance of your landscape design.

When properly constructed, a solid base foundation helps prevent paver settling, shifting, and water accumulation. Use of edge restraints and jointing sand is recommended as best practice by ICPI (Interlocking Concrete Pavement Institute).

When choosing and installing jointing sand, please ensure to follow the directions given by the manufacturer. To find out more about base preparation and installation practices, visit www.icpi.org.

Colour distribution

When installing stone, we recommend you select a mix of materials from several different bundles to ensure a balanced distribution of surface colour textures and colour mixtures.

Always verify colours and products chosen for your concrete landscape project with your contractor or landscape designer prior to installation. Physical or printed colour samples are only representations of the chosen product. If you notice a discrepancy, notify us immediately before continuing with your project. Full installation is understood as your acceptance of the product's condition.

Concrete care

Maintaining the surface of your concrete pavers is essential to their aesthetic. Sealing your concrete pavers can enhance the colour, but it's optional as our pavers are just as durable with or without the addition of sealants. If you plan on sealing your concrete products, always follow the manufacturer's instructions for proper application.

Unfortunately, even materials as durable as concrete can scratch, chip, or stain if handled incorrectly. When compacting our pavers, ensure that a rubber membrane is added to protect textured surfaces from potential damage. Use a rubber blade when removing snow from the surface of our pavers to prevent surface scratching and damage. Best Way Stone is not responsible for the damage left by the misuse of compaction or snow removal equipment.

Efflorescence

Efflorescence is that white, powdery substance that appears on the surface of concrete and it's a naturally occurring process. Efflorescence does not affect the structural integrity or strength of the product and will usually wear off over time – although special cleaners can be used to speed up its removal. For more information visit www.icpi.org.

Choosing a Contractor

Although not required, hiring a qualified contractor makes installing stone a much more efficient and less stressful experience. When hiring a qualified professional we recommend they follow industry standard guidelines.

When hiring a contractor, we recommend collecting project references and samples of previous work. Make sure they offer a comprehensive warranty, and have all the required insurance and licenses. Any contractor will understand the industry standards for installing stone – you can download a copy to these guidelines by visiting www.icpi.org.

Where to find our products

Best Way Stone has an extensive network of dealers throughout Ontario, Quebec, and North-East Michigan. Visit our website to find a dealer near you: www.bestwaystone.com/find-a-dealer





Uxbridge Outdoor Design Centre

Speak to our customer service experts to help bring your design to life. Feel free to bring samples home along with some piece-of-mind.

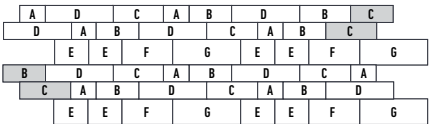
Outdoor Design Centre

65 Anderson Boulevard
Uxbridge, ON



Pattern Guides

Manhattan Plank



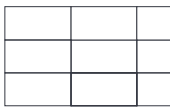
Avari™



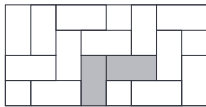
3/4 OFFSET
*FOR BEST PRACTICE



BRICK JOINT

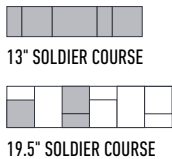
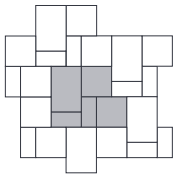


TILE JOINT



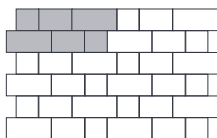
HERRINGBONE

Trevista® 80 & 50



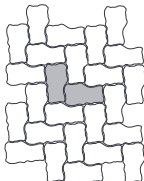
13" SOLDIER COURSE
19.5" SOLDIER COURSE

Corso®



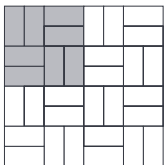
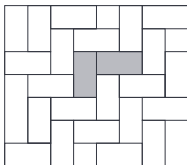
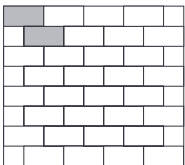
INSTALL RANDOMLY WITH A 1:1:1 RATIO

Ardesia®

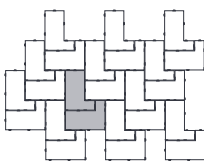


MOST RANDOM FINISH

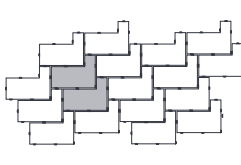
Adelaide™ 80 & 50 & Richmond™ 80 & 50



Moderna®



MOST RANDOM FINISH

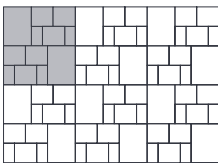


MAXIMUM PERMEABILITY

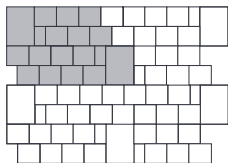


16" SOLDIER COURSE

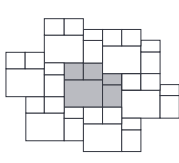
Strada® Nova



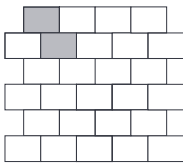
JUMBO 39%
LARGE 46%
SMALL 15%



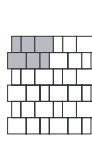
JUMBO 25%
LARGE 70%
SMALL 5%



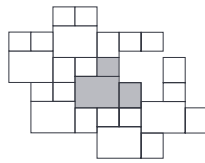
JUMBO 46%
LARGE 18%
MEDIUM 27%
SMALL 9%



LARGE 100%

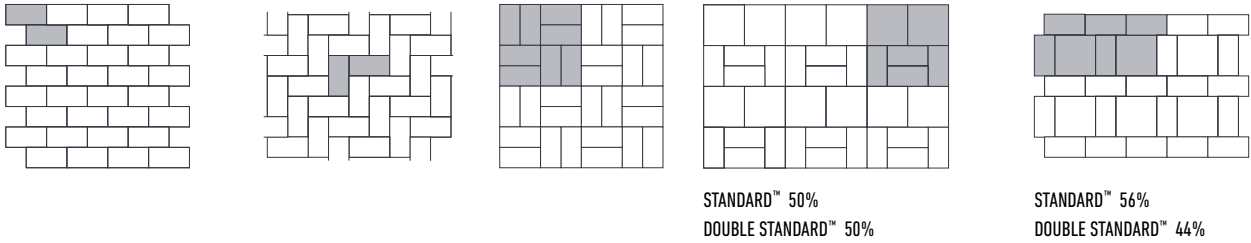


LARGE 44%
MEDIUM 33%
SMALL 23%

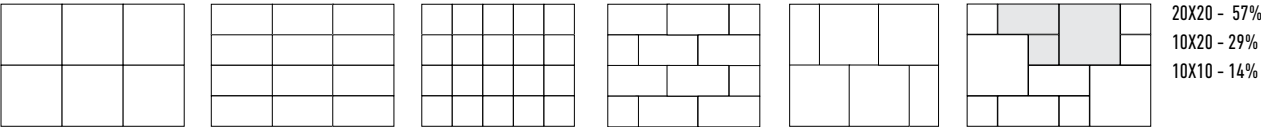


JUMBO 50%
LARGE 20%
MEDIUM 30%

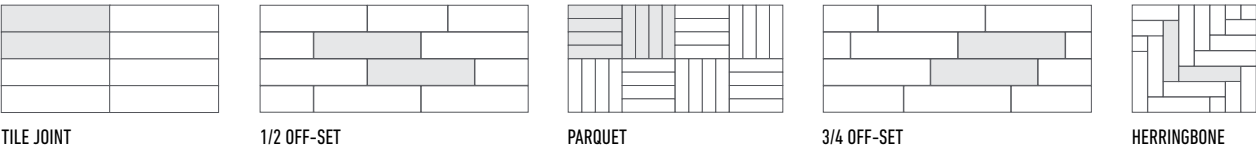
Standard™ & Double Standard™



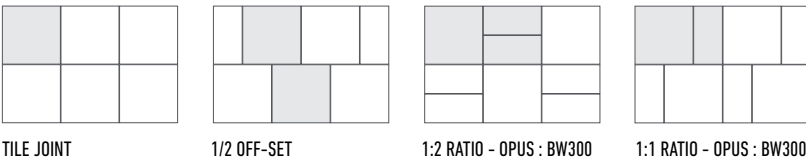
Tresca™



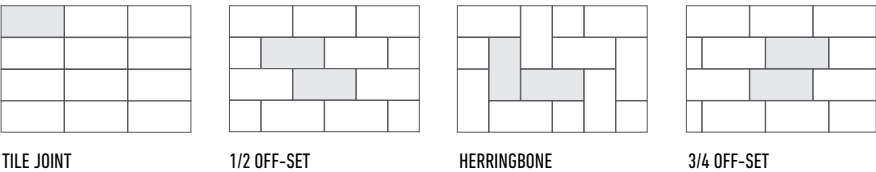
Balsam



Opus



BW300



2020 Colour Chart

	Beige Mix	Carrara	Driftwood	Glacier Creek	Grey Mix	Kashmir Blend	Ultra Black	Buff Mix	Buff Brown	Charcoal	Ebony	Fond du lac	Granite	Grey	Manitou	Muskoka	Nightfall	Pearl	Phantom	Sahara Blend	Salmon	Salmon Mix	Sandstone	Silverbirch	Red	Red Mix	Rustic Salmon Mix	White	Windsor	Winterhorn	
PAVERS																															
Adelaide® 80																															
Ardesia®																															
Corso®																															
Double Standard™																															
Manhattan Plank																															
Moderna®																															
Richmond™ 80																															
Standard™																															
Strada® Nova																															
Trevista® 80 Smooth																															
Trevista® 80 Textured																															
SLABS																															
Adelaide® 50																															
Avari™																															
Balsam																															
Basketweave™ 24x30																															
Basketweave™ 24x24																															
Basketweave™ 12x24																															
BW300																															
Flagstone™																															
Opus																															
Richmond™ 50																															
SR Paver																															
Standard Press™ 24x30																															
Standard Press™ 24x24																															
Standard Press™ 16x16																															
Standard Press™ 12x24																															
Tresca™																															
Trevista® 50 Smooth																															
Trevista® 50 Textured																															

	Beige Mix	Carrara	Driftwood	Glacier Creek	Grey Mix	Kashmir Blend	Ultra Black	Buff Mix	Buff Brown	Charcoal	Ebony	Fond du lac	Granite	Grey	Manitou	Muskoka	Nightfall	Pearl	Phantom	Sahara Blend	Salmon	Salmon Mix	Sandstone	Silverbirch	Red	Red Mix	Rustic Salmon Mix	White	Windsor	Winterborn	
WALLS																															
Antico® Stacker	■				■		■													■								■			
Belvedere™	■														■						■									■	
Garden Lock™	■						●							■														■			■
Hazlelton	■																														
Ikon	■													■							■										
Palladio® Antico®	■													■							■										
Parkwall®	■						●							■							■		■				■				■
Parkwall® Antico	■																														
RidgeWall®														■																	
Rockton												■			■																
Soho		■	■	■	■		■																								
COPINGS																															
Barollo®							■							■							■										
Belvedere™															■	■														■	
Bullnose Column Cap							■								■						■										
Dimensional															■	■														■	
Garden Lock™	■					■																						■			■
Montana											■		■											■							
Montana Column Cap											■		■											■							
Palladio® Antico®	■																				■										
Parkwall®	■					■		■						■							■		■					■			■
Parkwall® Antico	■					■															■										
Parkwall® Column Cap							■							■							■										
Riviera Cap											■		■								■				■						
Sopra Coping							■							■							■										
STEPS																															
Camden Step™							■														■										
Ikon Step							■							■							■										
Ridge Step™	■					■								■																	
CURBS																															
Antico®	■				■																							■			
Driveway										■				■												■					
Garden										■				■												■					

● Coping Only

Colour swatches and photographs are not exact representations of colour, but are given to provide close reference.

Measurements and product dimensions are nominal.

Registered trademarks, logos and product names are the property of Best Way Stone Limited®.

022020R1

Parkwall®, Parkwall® Antico®, Palladio® Antico®, Garden Lock™ US Patents 6398458 & 6178715; Canadian Patent 2193942.

RidgeWall® US Patent Pending 20140270989; Canadian Patent Pending 2809704.

Moderna® US Patents D701619 & D689624; Canadian Industrial Design Registrations 138841 & 138842.

Antico® Pavers & Walls
Ecoscape®



2020 LANDSCAPE PRODUCTS

107

Masonry & Builder



Chimney Caps
Key Stones
Simplicity Steps
Splash Pads
Window Sills

For information on our masonry & builder collection visit:
bestwaystone.com

FIND
A
DEALER

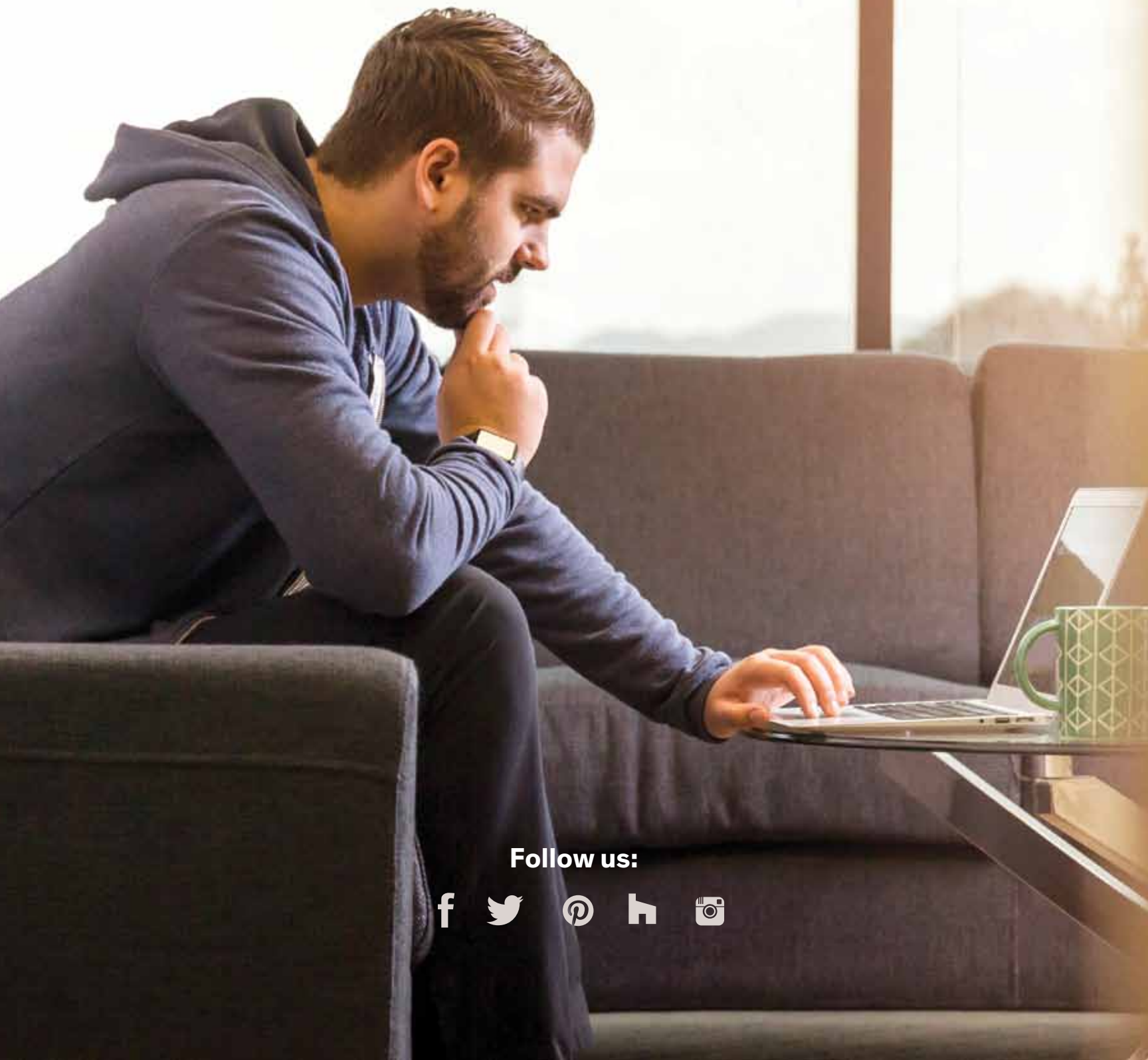
FIND
A
LANDSCAPER

DOWNLOAD
OUR
CATALOGUE

SEE
DESIGN
IDEAS

CONNECT
WITH
US

Do it all at from the comfort of home at:
bestwaystone.com



Follow us:





1-800-bestway (237-8929)

bestwaystone.com

Woodbridge (Head Office)

8821 Weston Road
Woodbridge, ON L4L 0K9
T 416-747-0988
F 905-851-7603

Uxbridge

65 Anderson Boulevard
Uxbridge, ON L9P 0C7
T 905-640-5845
F 905-640-9773



facebook/bestwaystone



@bestwaystone



pinterest/bestwaystone



houzz/bestwaystone



@bestwaystone